

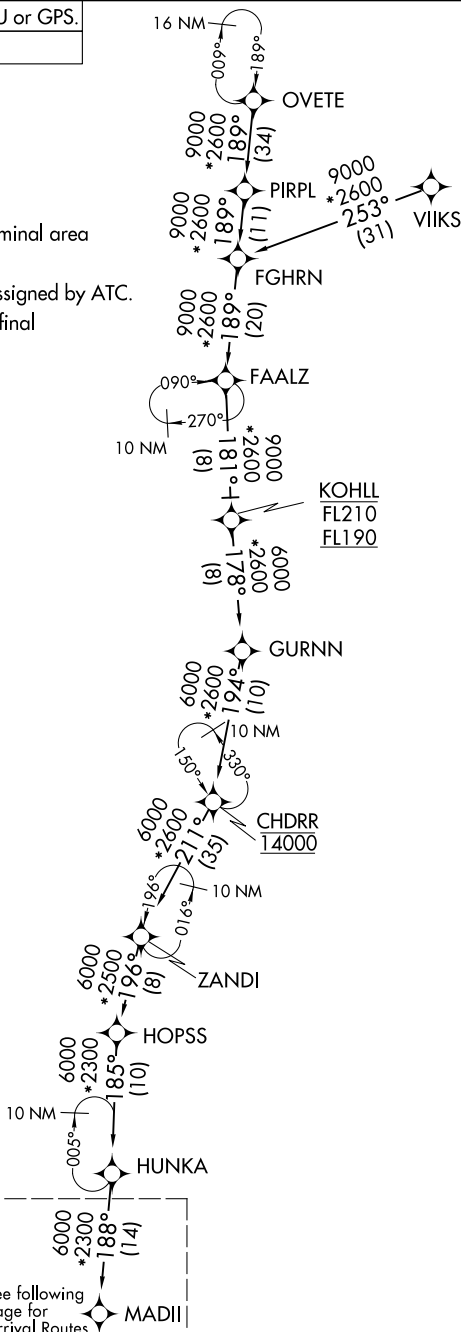
AL-166 (FAA)

CHICAGO O'HARE INTL (ORD)  
CHICAGO, ILLINOIS

RNAV 1 - DME/DME/IRU or GPS.
RADAR required.

NOTE: ORD landing east: Expect RADAR vectors to final approach course after MADII.

CHDRR TRANSITION (CHDRR.MADI17):  
FAALZ TRANSITION (FAALZ.MADI17):  
FGHRN TRANSITION (FGHRN.MADI17):  
KOHLL TRANSITION (KOHLL.MADI17):  
OVETE TRANSITION (OVETE.MADI17):  
PIRPL TRANSITION (PIRPL.MADI17):  
VLIKS TRANSITION (VLIKS.MADI17):  
ZANDI TRANSITION (ZANDI.MADI17):



NOTE: Chart not to scale.

See following  
page for  
Arrival Routes

CHICAGO, ILLINOIS  
CHICAGO O'HARE INTL (ORD)

(MADII.MADII7) 20APR23