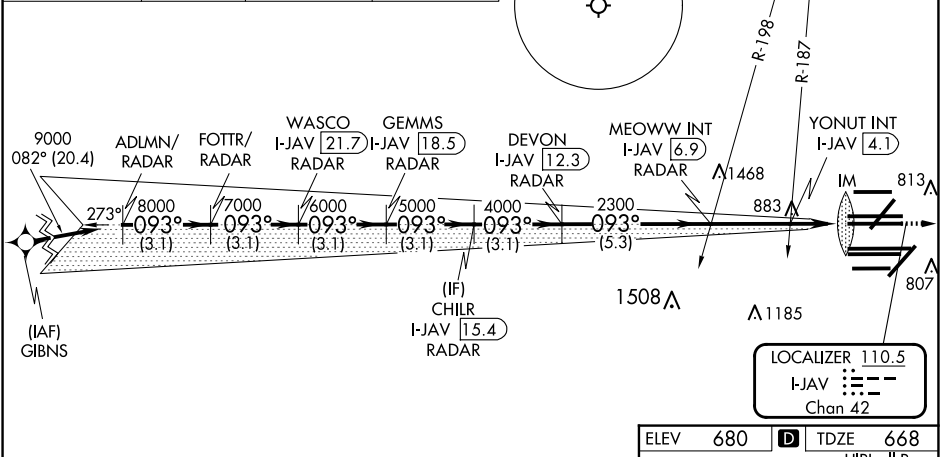
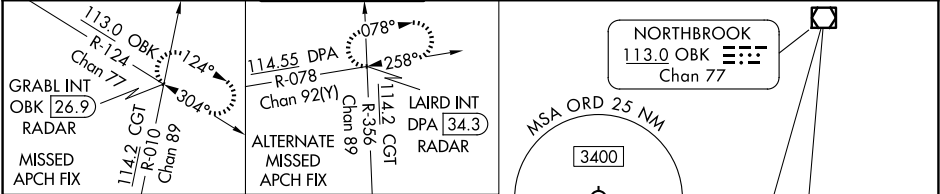


LOC/DME I-JAV 110.5 Chan 42	APP CRS 093°	Rwy Ldg 11260 TDZE 668 Apt Elev 680
---	------------------------	--

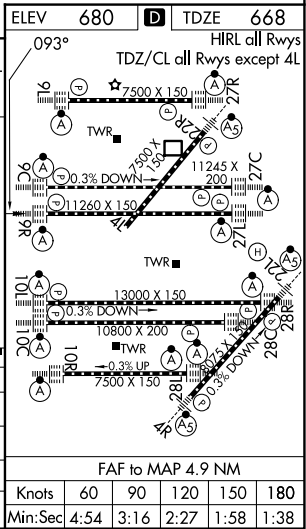
ILS or LOC RWY 9R
CHICAGO O'HARE INTL (ORD)

RNP APCH-GPS from GIBNS.	ALSIF-2	MISSED APPROACH: Climb to 1200 then climb to 4000 on heading 085° and OBK VOR/DME R-124 to GRABL INT/OKB 26.9 DME/RADAR and hold.
Simultaneous approach authorized. For inop ALS, increase S-LOC 9R Cat C/D visibility to 2 SM.		

D-ATIS 135.4 282.225	CHICAGO APP CON 119.0 292.125	O'HARE TOWER 126.9 348.0	GND CON 124.125 (TWR NORTH) 118.05 (TWR SOUTH) 226.675 (ALL TWRs)	(TWR CENTER) 121.75 (OBND) 121.9 (IBND)	CLNC DEL 121.6	CPDLC
--	---	------------------------------------	---	---	--------------------------	-------



VGSI and ILS glidepath not coincident (VGSI Angle 3.00/TCH 76).										1200	4000	OBK R-124	GRABL INT
ADLMN/ RADAR	FOTTR/ RADAR		WASCO I-JAV [21.7] RADAR		GEMMS I-JAV [18.5] RADAR		CHILR I-JAV [15.4] RADAR		MEOWW INT I-JAV [6.9] RADAR	YONUT INT I-JAV [4.1] RADAR		IM I-JAV [2]	
9000	093°	8000	7000	6000	5000	4000	2300	1380	2300	1380	0.9	1.2	
GS 3.00° TCH 58										5.3 NM	2.8 NM	0.9 NM	1.2 NM
CATEGORY	A			B			C			D			
S-ILS 9R	868/18						200 (200-½)						
S-LOC 9R	1380/24			712 (700-½)			1380-1½			712 (700-1%)			
YONUT FIX MINIMUMS (DUAL VOR RECEIVERS OR DME REQUIRED)													
S-LOC 9R	1120/24			452 (500-½)			1120/45			452 (500-¾)			



EC-3, 10 JUL 2025 to 07 AUG 2025

EC-3, 10 JUL 2025 to 07 AUG 2025