

LOC/DME I-OYG 111.9 Chan 56	APP CRS 093°	Rwy Ldg 11245 TDZE 673 Apt Elev 680
---	------------------------	--

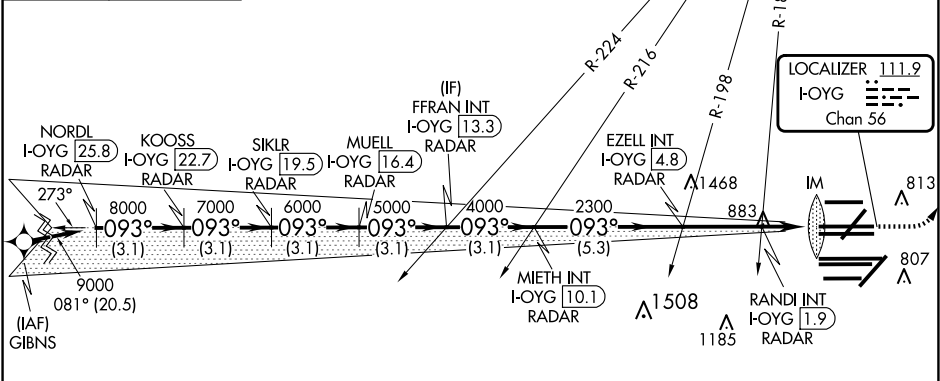
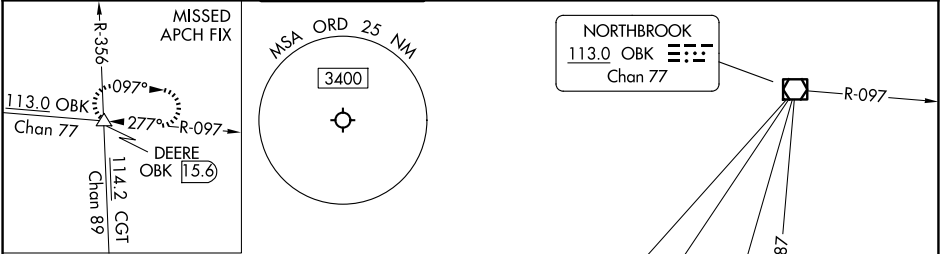
ILS or LOC RWY 9C
CHICAGO O'HARE INTL (ORD)

DME or RADAR required. From GIBNS: RNAV 1-GPS required. Aircraft not GPS equipped - RADAR required for procedure entry.

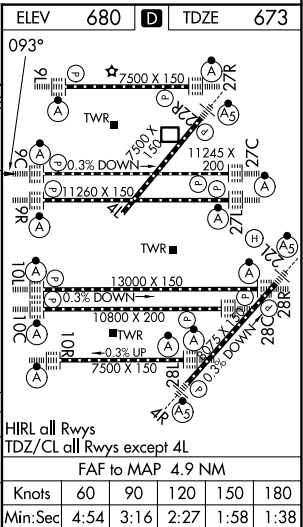
ALSF-2
MISSED APPROACH: Climb to 1200 then climbing left turn to 4000 on heading 037° and OBK VOR/DME R-097 to DEERE INT/ OBK 15.6 DME and hold.

Simultaneous approach authorized. For inop ALS, increase S-LOC 09C Cat C/D visibility to 1½ SM.

D-ATIS 135.4 282.225	CHICAGO APP CON 119.0 292.125	O'HARE TOWER 121.15 348.0	124.125 118.05 226.675 (ALL TWRS)	GND CON (TWR NORTH) 121.75 (OBND) (TWR SOUTH)	CLNC DEL 121.6	CPDLC
--	--	-------------------------------------	--	---	--------------------------	-------



NORDL I-OYG 25.8 RADAR	KOOSS I-OYG 22.7 RADAR	SIKLR I-OYG 19.5 RADAR	MUELL I-OYG 16.4 RADAR	FFRAN INT I-OYG 13.3 RADAR	EZELL INT I-OYG 4.8 RADAR	MIETH INT I-OYG 10.1 RADAR	RANDI INT I-OYG 1.9 RADAR	DEERE I-OYG 0.2 RADAR
9000	8000	7000	6000	5000	4000	3000	2300	1400
3.1 NM	3.1 NM	3.1 NM	3.1 NM	3.1 NM	5.3 NM	2.8 NM	0.7 NM	1.1 NM
CATEGORY A B C D								
S-ILS 9C 873/18 200 (200-½)								
S-LOC 9C 1140/24 467 (500-½) 1140/50 467 (500-1)								



EC-3, 10 JUL 2025 to 07 AUG 2025

EC-3, 10 JUL 2025 to 07 AUG 2025