

LOC/DME I-TSL <b>111.1</b> Chan <b>48</b>	APP CRS <b>273°</b>	Rwy Ldg <b>13000</b> TDZE <b>651</b> Apt Elev <b>680</b>	ILS or LOC RWY 28R CHICAGO O'HARE INTL (ORD)
---	------------------------	--	---

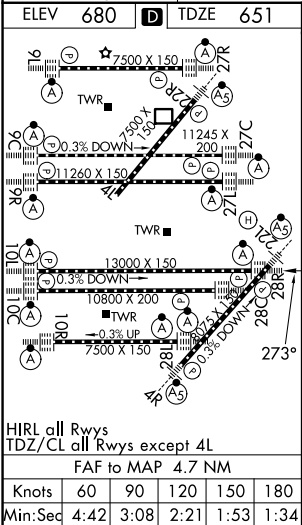
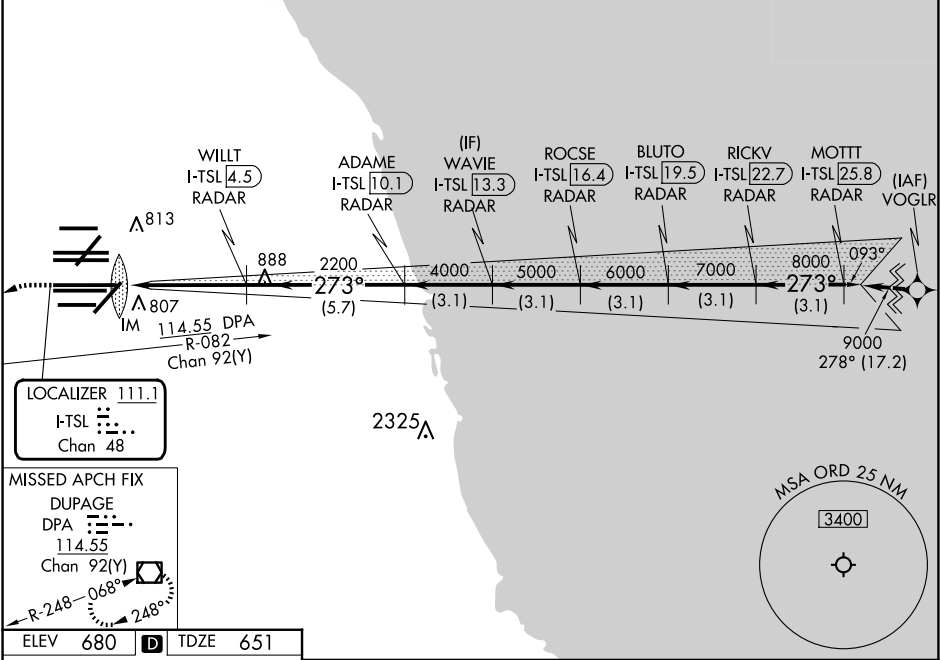
From VOGLR: RNAV 1-GPS required.  
Aircraft not GPS equipped - RADAR required for procedure entry.  
DME or RADAR required.

Simultaneous approach authorized.

ALSIF-2

MISSED APPROACH: Climb to 1100 then climbing left turn to 4000 on heading 215° and DPA VOR/DME R-082 to DPA VOR/DME and hold.

D-ATIS <b>135.4</b> <b>282.225</b>	CHICAGO APP CON <b>119.0 292.125</b>	O'HARE TOWER <b>132.7 348.0</b>	<b>124.125</b> GND CON (TWR NORTH) <b>118.05</b> (TWR SOUTH) <b>226.675</b> (ALL TWRs)	<b>121.75</b> (TWR CENTER) (OBND) <b>121.9</b> (IBND)	CLNC DEL <b>121.6</b>	CPDLC
--	---	------------------------------------	--	--	--------------------------	-------



ELEV 680	TDZE 651	1100	4000	DPA	VGSI and ILS glidepath not coincident (VGSI Angle 3.00/TCH 70).
*LOC only.					
WAVIE I-TSL 13.3 RADAR, BLUTO I-TSL 19.5 RADAR, MOTT I-TSL 25.8 RADAR, RICKV I-TSL 22.7 RADAR, ROCSE I-TSL 16.4 RADAR, ADAME I-TSL 10.1 RADAR, WILLT I-TSL 4.5 RADAR, I-TSL DME ANTENNA I-TSL 0.3					
IM, 2200, 4000, 5000, 6000, 7000, 8000, 9000, GS 3.00° TCH 54					
CATEGORY A B C D					
S-ILS 28R 851/18 200 (200-½)					
S-LOC 28R 1120/24 469 (500-½) 1120/50 469 (500-1)					