

LOC/DME I-VZE

**108.95**

Chan **26 (Y)**

APP CRS

**273°**

Rwy Ldg

**10800**

TDZE

**651**

Apt Elev

**680**

**ILS or LOC RWY 28C**

CHICAGO O'HARE INTL (ORD)

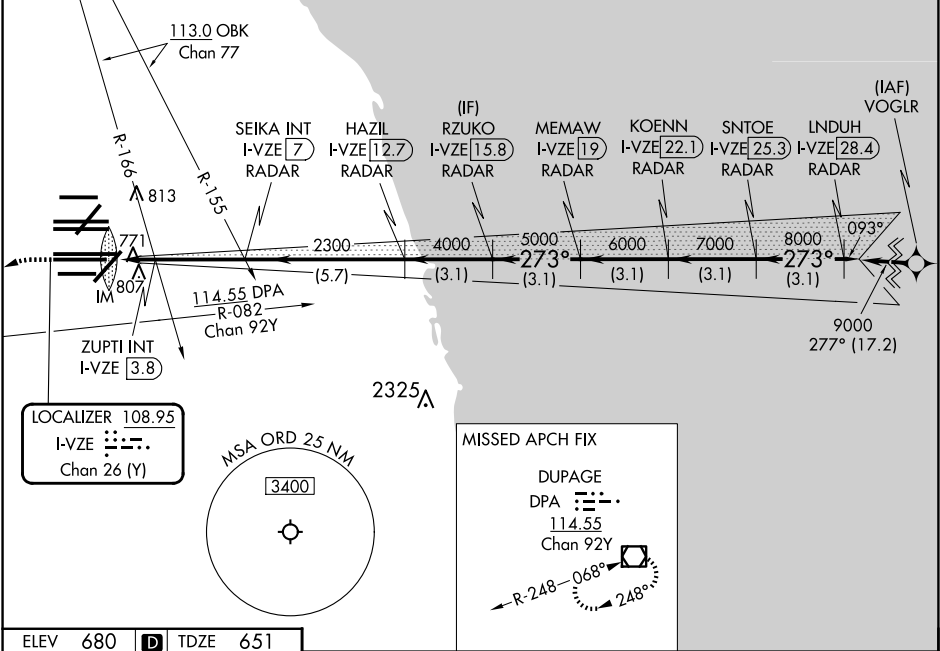
From VOGIR: RNAV 1-GPS required.  
Aircraft not GPS equipped - RADAR required for procedure entry.  
DME or RADAR required.

Simultaneous approach authorized.

ALSf-2

MISSED APPROACH: Climb to 1100 then climbing left turn to 4000 on heading 215° and DPA VOR/DME R-082 to DPA VOR/DME and hold.

D-ATIS <b>135.4</b> <b>282.225</b>	CHICAGO APP CON <b>119.0 292.125</b>	O'HARE TOWER <b>120.75 348.0</b>	<b>124.125</b> <b>118.05</b> <b>226.675</b> (ALL TWRS)	GND CON (TWR NORTH) (TWR SOUTH) (ALL TWRS)	<b>121.75</b> <b>121.9</b> (BND)	CLNC DEL <b>121.6</b>	CPDLC
--	--	-------------------------------------	--	---	-------------------------------------	--------------------------	-------



ELEV <b>680</b>	<b>D</b>	TDZE <b>651</b>	1100	4000	DPA	DPA	RZUKO I-VZE 15.8	KOENN I-VZE 22.1	LNDUH I-VZE 28.4
*LOC only.			hdg 215°	R-082			SEIKA INT I-VZE 7	MEMAW I-VZE 19	SNTOE I-VZE 25.3
I-VZE 2			ZUPTI INT I-VZE 3.8	HAZIL I-VZE 12.7	2300	4000	5000	6000	7000
IM			I-VZE 2.9	2300	4000	5000	6000	7000	8000
VGSi and ILS glidepath not coincident (VGSi Angle 3.00/TCH 80).			GS 3.00° TCH 55						
CATEGORY			A	B	C	D			
S-ILS 28C			851/18 200 (200-½)						
S-LOC 28C			1200/24 549 (600-½)		1200/60 549 (600-1¼)				
ZUPTI FIX MINIMUMS (DUAL VOR RECEIVERS OR DME REQUIRED)									
S-LOC 28C			1040/24 389 (400-½)		1040/35 389 (400-¾)				