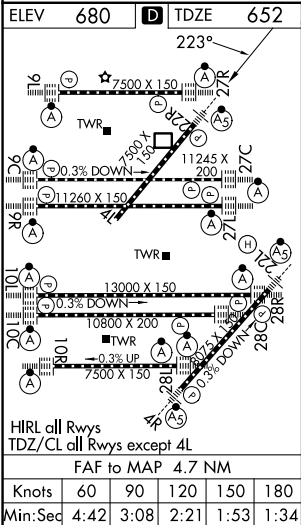
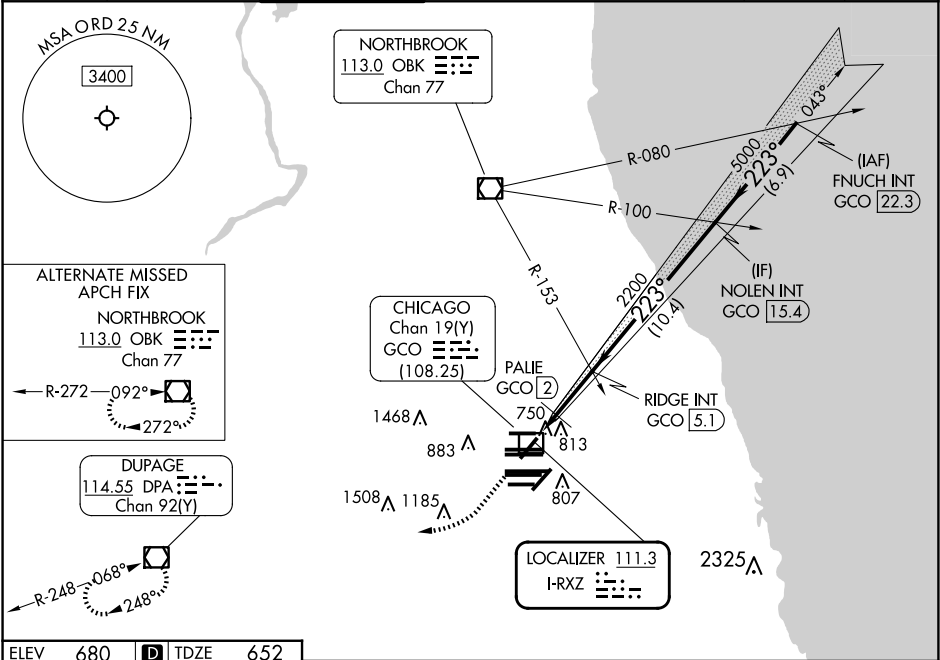




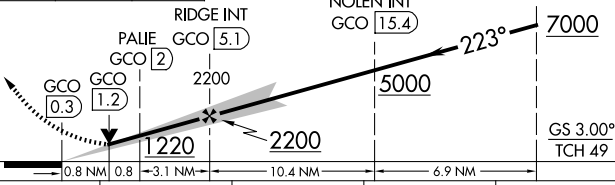


LOC I-RXZ	APP CRS	Rwy Ldg	7300
111.3	223°	TDZE	652
		Apt Elev	680

ILS or LOC RWY 22R

CHICAGO O'HARE INTL (ORD)

RADAR required for procedure entry.		MALSR	MISSED APPROACH: Climb to 1300 then climbing right turn to 4000 direct DPA VOR/DME and hold.		
<div><div></div><div></div></div>	Simultaneous approach authorized. DME from GCO DME.				
D-ATIS 135.4 282.225	CHICAGO APP CON 119.0 292.125	O'HARE TOWER 126.9 348.0	124.125 118.05 226.675	GND CON (TWR NORTH) (TWR SOUTH) (ALL TWRs)	(TWR CENTER) 121.75 (OBND) 121.9 (IBND)
				CLNC DEL 121.6	CPDLC



1300 ↑	4000 	DPA 	VGSI and ILS glidepath not coincident (VGSI Angle 3.00/TCH 69).			
						
CATEGORY	A		B	C	D	
S-ILS 22R	852/18 200 (200-½)					
S-LOC 22R	1220/24 568 (600-½)			1220-1¼ 568 (600-1¼)		
 CIRCLING	1220-1 540 (600-1)			1220-1⅝ 1460-2½ 540 (600-1⅝) 780 (800-2½)		
PALIE FIX MINIMUMS						
S-LOC 22R	980/24 328 (300-½)			980/26 328 (300-½)		
 CIRCLING	1220-1 540 (600-1)			1220-1½ 1460-2½ 540 (600-1½) 780 (800-2½)		