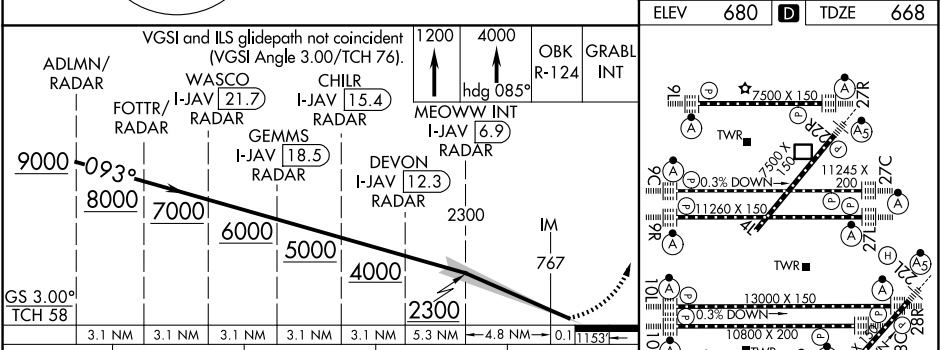
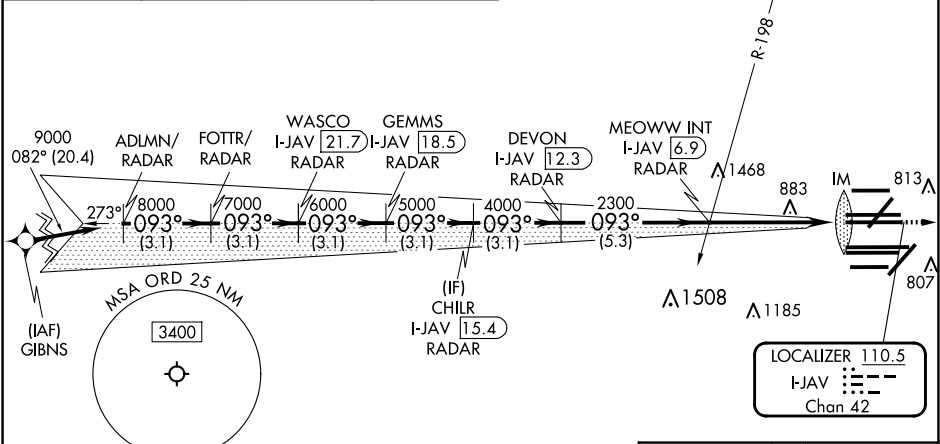
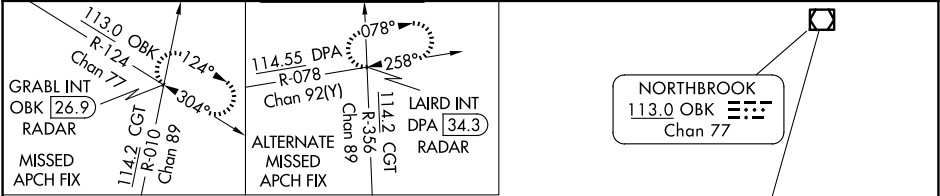


LOC/DME I-JAV <b>110.5</b> Chan <b>42</b>	APP CRS <b>093°</b>	Rwy Ldg <b>11260</b> TDZE <b>668</b> Apt Elev <b>680</b>
---	------------------------	--

**ILS RWY 9R (CAT II & III)**  
**CHICAGO O'HARE INTL (ORD)**

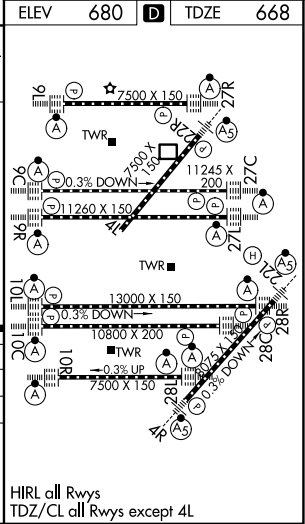
RNP APCH-GPS from GIBNS Aircraft not GPS equipped - RADAR required for procedure entry. RADAR or DME required.	ALSF-2 	MISSED APPROACH: Climb to 1200 then climb to 4000 on heading 085° and OBK VOR/DME R-124 to GRABL INT/OBK 26.9 DME/RADAR and hold.
---	------------	---

D-ATIS <b>135.4</b> <b>282.225</b>	CHICAGO APP CON <b>119.0 292.125</b>	O'HARE TOWER <b>126.9 348.0</b>	<b>124.125</b> GND CON <b>118.05</b> (TWR NORTH) <b>226.675</b> (TWR SOUTH) (ALL TWRs)	(TWR CENTER) <b>121.75</b> (OBND) <b>121.9</b> (IBND)	CLNC DEL <b>121.6</b>	CPDLC
--	---	------------------------------------	---	---	--------------------------	-------



CATEGORY	A	B	C	D
S-ILS 9R	CAT II	RA 99/12	100 DA 768	
S-ILS 9R	CAT III	RVR 06		

**CATEGORY II & III ILS - SPECIAL AIRCREW  
& AIRCRAFT CERTIFICATION REQUIRED**



EC-3, 10 JUL 2025 to 07 AUG 2025

EC-3, 10 JUL 2025 to 07 AUG 2025