

LOC/DME I-OYG	APP CRS	Rwy Ldg
111.9	093°	11245
Chan 56		TDZE 673
		Apt Elev 680

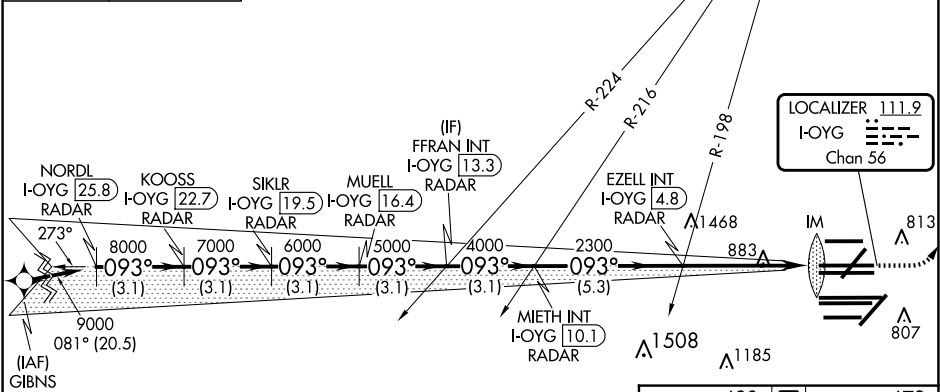
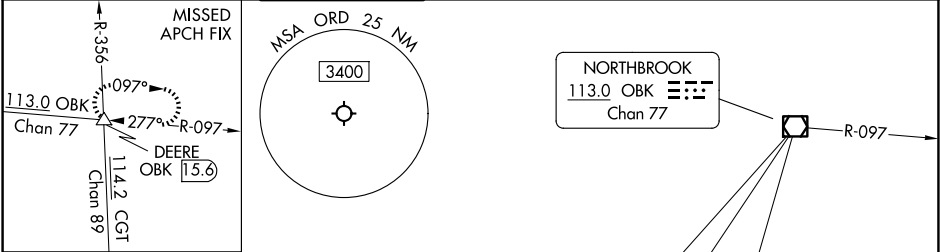
ILS RWY 9C (SA CAT I)
CHICAGO O'HARE INTL (ORD)

DME or RADAR required. From GIBNS: RNAV 1-GPS required. Aircraft not GPS equipped - RADAR required for procedure entry.

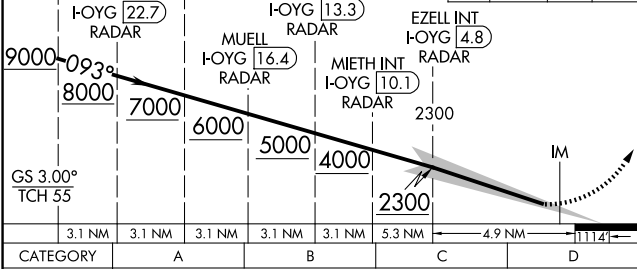
ALSIF-2
MISSED APPROACH: Climb to 1200 then climbing left turn to 4000 on heading 037° and OBK VOR/DME R-097 to DEERE INT/OBK 15.6 DME and hold.

Simultaneous approach authorized. Requires specific OPSPEC, MSPEC or LOA approval.

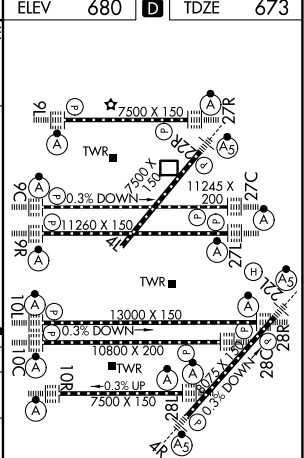
D-ATIS 135.4 282.225	CHICAGO APP CON 119.0 292.125	O'HARE TOWER 121.15 348.0	124.125 118.05 226.675 (TWR NORTH) (TWR SOUTH) (ALL TWRs)	GND CON (TWR CENTER) 121.75 (OBND) 121.9 (IBND)	CLNC DEL 121.6	CPDLC
--	--	-------------------------------------	---	--	--------------------------	-------



NORDL I-OYG [25.8] RADAR	VGSI and ILS glidepath not coincident (VGSI Angle 3.00°/TCH 72).	1200 4000 hdg 037°	DEERE OBK R-097 △
KOOSS I-OYG [22.7] RADAR	SIKLR I-OYG [19.5] RADAR	FFRAN INT I-OYG [13.3] RADAR	EZELL INT I-OYG [4.8] RADAR
MUELL I-OYG [16.4] RADAR	MIETH INT I-OYG [10.1] RADAR		



CATEGORY	A	B	C	D
S-ILS 9C	RA 154/14 150 DA 823			



SA CATEGORY I ILS - SPECIAL AIRCREW
& AIRCRAFT CERTIFICATION REQUIRED

HRL all Rwy's
TDZ/CL all Rwy's except 4L