

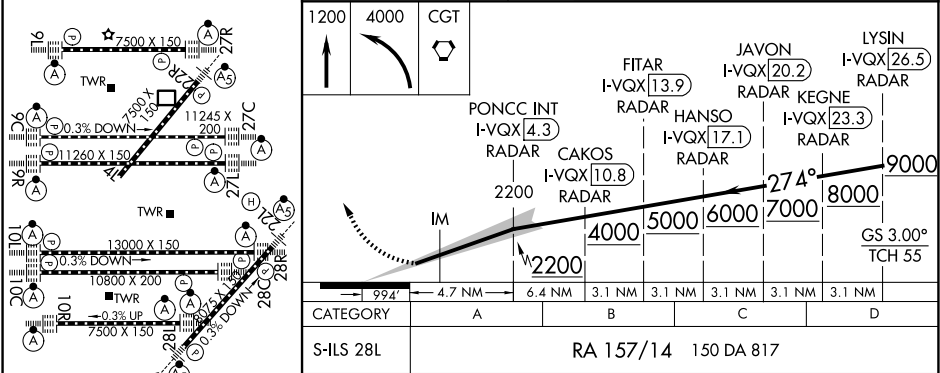
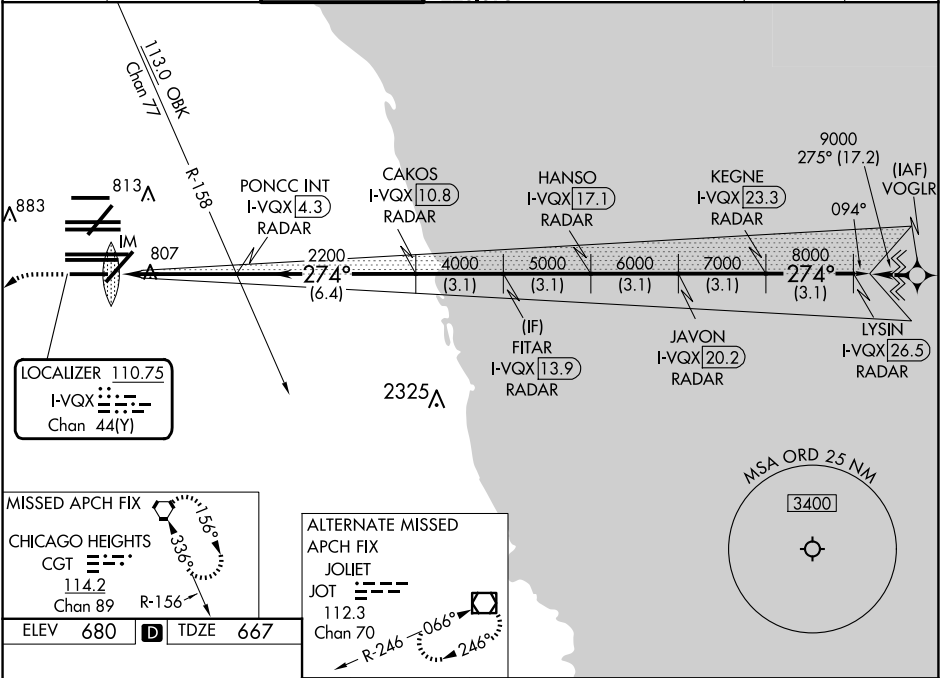
|  |                        |  |
|--|------------------------|--|
| LOC/DME I-VQX<br><b>110.75</b><br>Chan <b>44</b> (Y) | APP CRS<br><b>274°</b> | Rwy Ldg<br>TDZE<br>Apt Elev<br><b>7500</b><br><b>667</b><br><b>680</b> |
|--|------------------------|--|

ILS RWY 28L (SA CAT I)

CHICAGO O'HARE INTL (ORD)

|   |             |  |
|---|-------------|--|
| From VOGLR: RNAV 1-GPS required.  | ALSIF-2<br> | MISSED APPROACH: Climb to 1200 then climbing left turn to 4000 direct CGT VORTAC and hold. |
| Aircraft not GPS equipped - RADAR required for procedure entry. DME or RADAR required.                      |             |  |
| Simultaneous approach authorized.<br>Requires specific OPSPEC, MSPEC, or LOA approval and use of HUD to DH. |             |  |

|  |   |                                    |   |   |                          |       |
|--|---|------------------------------------|---|---|--------------------------|-------|
| D-ATIS<br><b>135.4</b><br><b>282.225</b> | CHICAGO APP CON<br><b>119.0 292.125</b> | O'HARE TOWER<br><b>133.0 348.0</b> | GND CON (TWR NORTH)<br><b>124.125</b><br>(TWR SOUTH)<br><b>118.05</b><br>(ALL TWRs)<br><b>226.675</b> | (TWR CENTER)<br><b>121.75</b> (OBND)<br><b>121.9</b> (IBND) | CLNC DEL<br><b>121.6</b> | CPDLC |
|--|---|------------------------------------|---|---|--------------------------|-------|



SA CATEGORY I ILS-SPECIAL AIRCREW  
& AIRCRAFT CERTIFICATION REQUIRED