

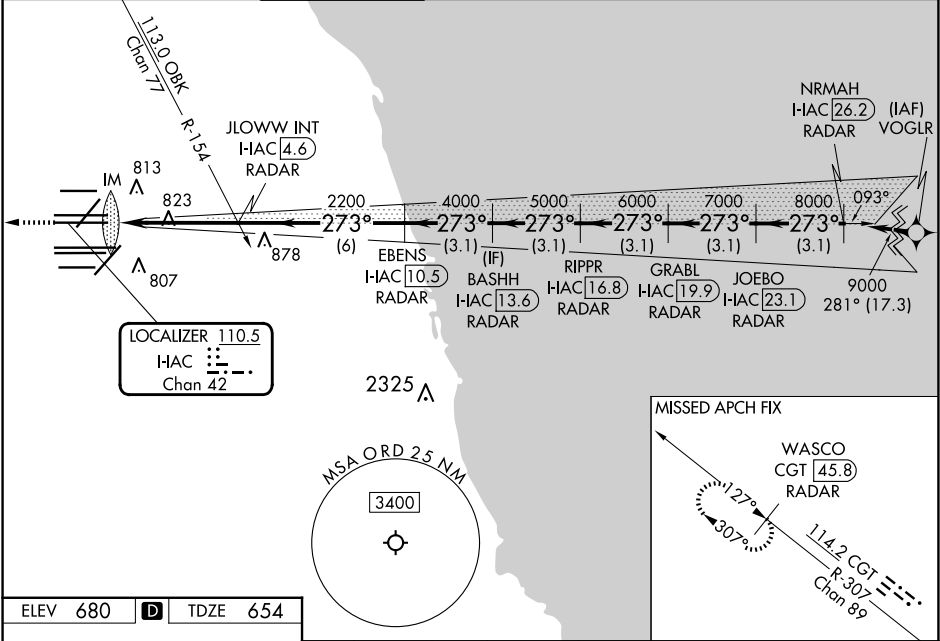
LOC/DME I-IAC	APP CRS	Rwy Ldg	11260
110.5	273°	TDZE	654
Chan 42		Apt Elev	680

ILS RWY 27L (SA CAT I)

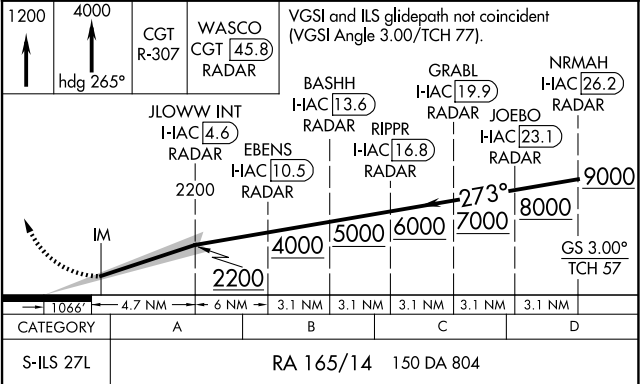
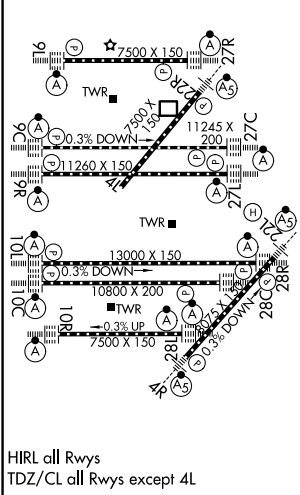
CHICAGO O'HARE INTL (ORD)

RNP APCH-GPS from VOGLR.	ALSF-2	MISSED APPROACH: Climb to 1200 then climb to 4000 on heading 265° and on CGT VORTAC R-307 to WASCO/CGT 45.8 DME/RADAR and hold.
Aircraft not GPS equipped - RADAR required for procedure entry. DME or RADAR required.		
Simultaneous approach authorized. Requires specific OPSPEC, MSPEC, or LOA approval.		

D-ATIS	CHICAGO APP CON	O'HARE TOWER	GND CON (TWR CENTER)	CLNC DEL	CPDLC
135.4			124.125 (TWR NORTH)		
282.225	119.0 292.125	126.9 348.0	118.05 (TWR SOUTH)	121.6	
			226.675 (ALL TWRS)		



ELEV 680	D	TDZE 654
----------	---	----------



SA CATEGORY I ILS - SPECIAL AIRCREW  
& AIRCRAFT CERTIFICATION REQUIRED