

ILS RWY 27L (CAT II & III)
CHICAGO O'HARE INTL (ORD)

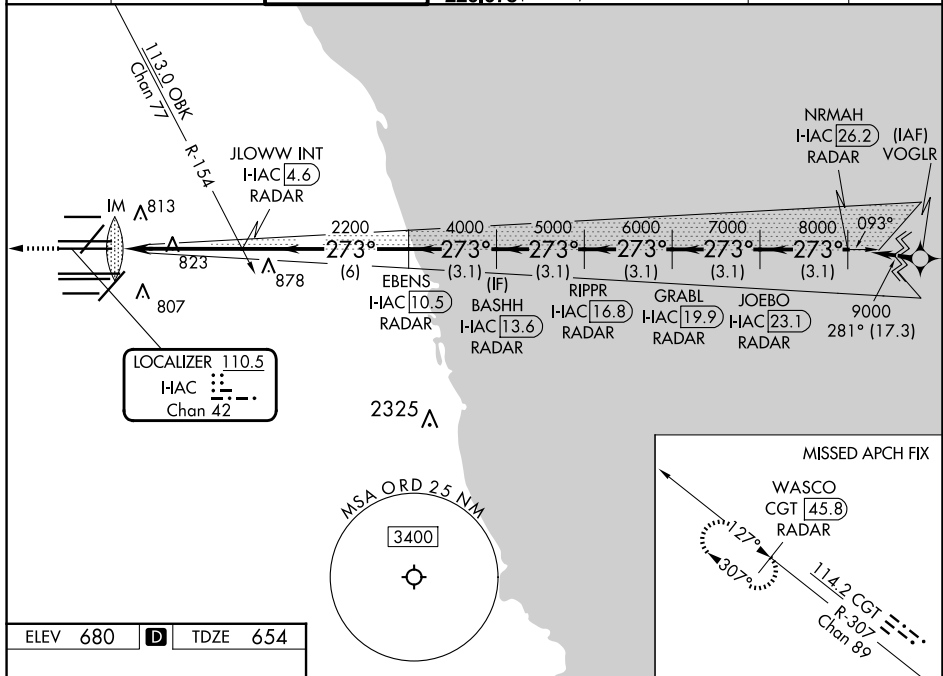
Aircraft not GPS equipped - RADAR required for procedure entry. DME or RADAR required.



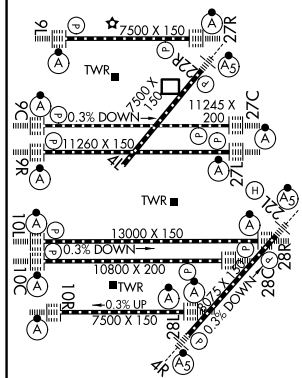
MISSED APPROACH: Climb to 1200 then climb to 4000 on heading 265° and on CGT VORTAC R-307 to WASCO/CGT 45.8 DME/RADAR and hold.

T Simultaneous approach authorized.

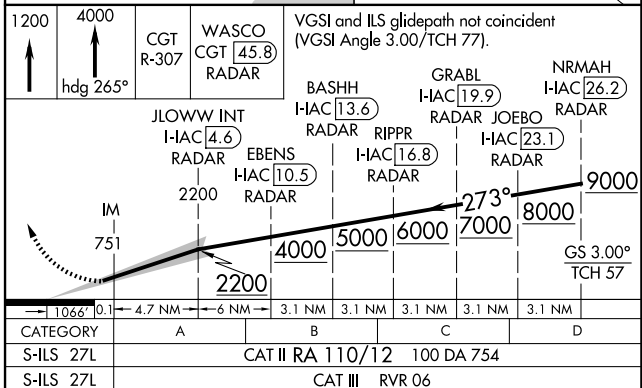
D-ATIS 135.4 282.225	CHICAGO APP CON 119.0 292.125	O'HARE TOWER 126.9 348.0	GND CON (TWR CENTER) 124.125 (TWR NORTH) 118.05 (TWR SOUTH) 226.675 (ALL TWRs)	121.75 (IBND) 121.9 (IBND)	CLINC DEL 121.6	CPDLC
----------------------------	-------------------------------------	-----------------------------	---	-------------------------------	--------------------	-------



ELEV 680	D	TDZE 654
----------	----------	----------



HIRL all Rwy's
TDZ/CL all Rwy's except 4L



CATEGORY II & III ILS - SPECIAL AIRCREW
& AIRCRAFT CERTIFICATION REQUIRED