
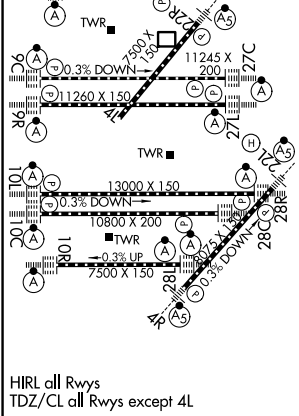
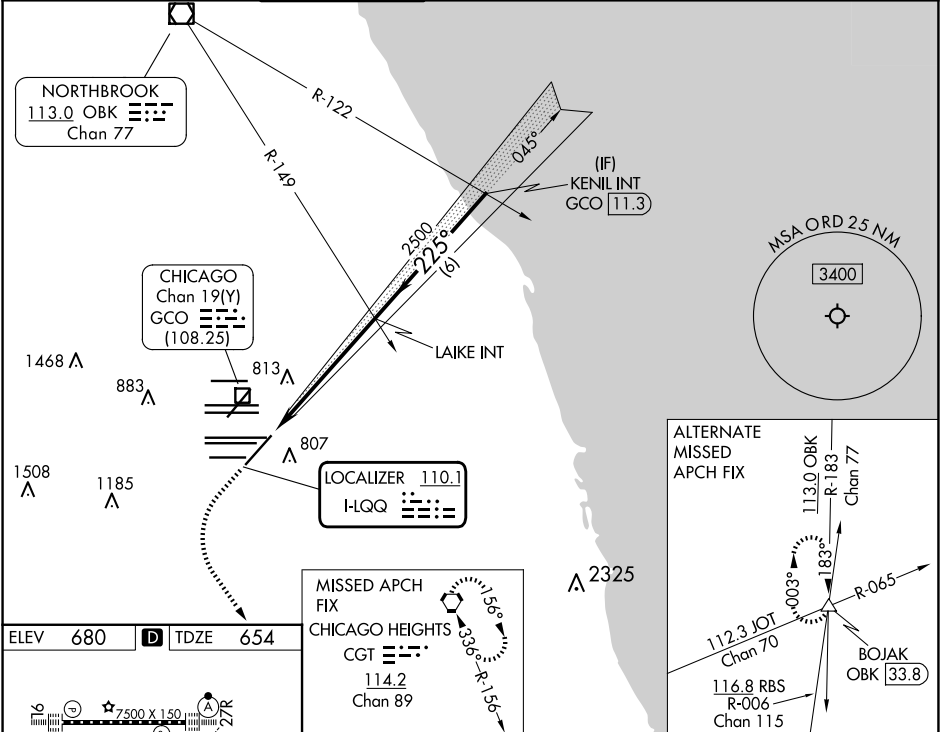





LOC I-LQQ	APP CRS	Rwy Ldg	8075
110.1	225°	TDZE	654
		Apt Elev	680

ILS RWY 22L (SA CAT I & II)

CHICAGO O'HARE INTL (ORD)

RADAR required for procedure entry.				<div>MALSR</div> <div></div>	MISSED APPROACH: Climb to 1100 then climbing left turn to 4000 direct CGT VORTAC and hold.	
<div>Simultaneous approach authorized.</div> <div>SA CAT I: Requires specific OPSPEC, MSPEC, or LOA approval and use of HUD to DH.</div> <div>SA CAT II: Reduced lighting: Requires specific OPSPEC, MSPEC, or LOA approval and use of autoland or HUD to touchdown.</div>						
<div>D-ATIS</div> <div>135.4</div> <div>282.225</div>	<div>CHICAGO</div> <div>APP CON</div> <div>119.0 292.125</div>	<div>O'HARE TOWER</div> <div>120.75 348.0</div>	<div>GND CON</div> <div>124.125 (TWR NORTH)</div> <div>118.05 (TWR SOUTH)</div> <div>226.675 (ALL TWRs)</div>	<div>(TWR CENTER)</div> <div>121.75 (OBND)</div> <div>121.9 (IBND)</div>	<div>CLNC DEL</div> <div>121.6</div>	<div>CPDLC</div>



1100	4000	CGT	VGSI and ILS glidepath not coincident (VGSI Angle 3.00/TCH 73).			
						
			KENIL INT GCO 11.3			
			LAIKE INT 2500			
			225°			
			4000			
			GS 3.00° TCH 55			
			5.6 NM			
			6 NM			
CATEGORY	A		B	C	D	
S-ILS 22L	SA CAT I		RA 164/16	150 DA 804		
S-ILS 22L	SA CAT II		RA 112/12	100 DA 754		

SA CATEGORY I & II ILS - SPECIAL AIRCREW & AIRCRAFT CERTIFICATION REQUIRED