
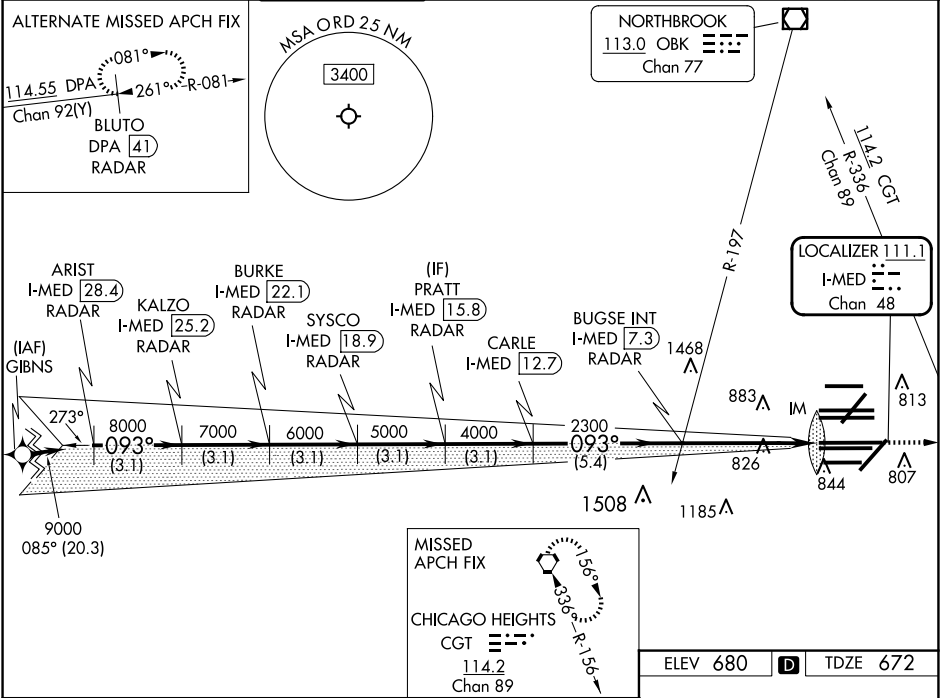


LOC/DME I-MED 111.1 Chan 48	APP CRS 093°	Rwy Ldg TDZE 672 Apt Elev 680
---	------------------------	---

ILS RWY 10L (CAT II & III)
CHICAGO O'HARE INTL (ORD)

From GIBNS: RNAV-1 GPS required.			ALSF-2 	MISSED APPROACH: Climb to 4000 on heading 093° and CGT VORTAC R-336 to CGT VORTAC and hold.		
RNAV 1-GPS or RADAR required for procedure entry. DME or RADAR required.						
▼ Simultaneous approach authorized.						
D-ATIS 135.4 282.225	CHICAGO APP CON 119.0 292.125	O'HARE TOWER 132.7 348.0	GND CON 124.125 (TWR NORTH) 118.05 (TWR SOUTH) 226.675 (ALL TWRS)	(TWR CENTER) 121.75 (OBND) 121.9 (IBND)	CLNC DEL 121.6	CPDLC



ARIST I-MED 28.4 RADAR	KALZO I-MED 25.2 RADAR	BURKE I-MED 22.1 RADAR	PRATT I-MED 15.8 RADAR	BUGSE INT I-MED 7.3 RADAR	CARLE I-MED 12.7 RADAR	IM
9000	8000	7000	6000	5000	4000	2300
GS 3.00° TCH 56						
3.1 NM	3.1 NM	3.1 NM	3.1 NM	3.1 NM	5.4 NM	4.9 NM
1113'						
CATEGORY	A					
S-ILS 10L	CAT II RA 95/12 100 DA 772					
S-ILS 10L	CAT III RVR 06					
CATEGORY II and III ILS - SPECIAL AIRCREW & AIRCRAFT CERTIFICATION REQUIRED						

