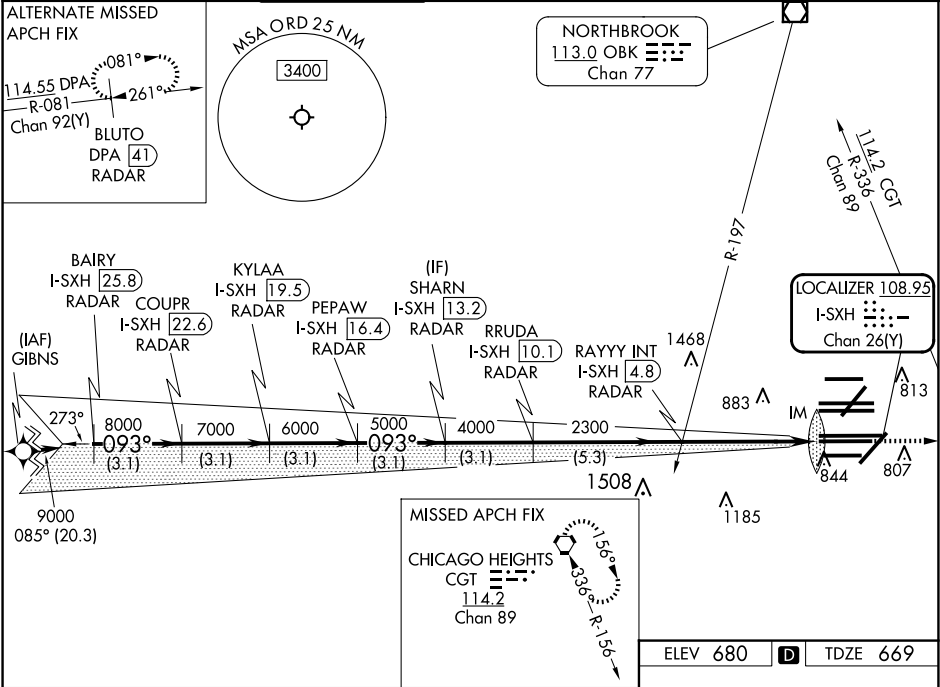


LOC/DME I-SXH 108.95 Chan 26(Y)	APP CRS 093°	Rwy Ldg TDZE 669 Apt Elev 680	ILS RWY 10C (CAT II & III) CHICAGO O'HARE INTL (ORD)
--	------------------------	---	---

From GIBNS: RNAV-1 GPS required.	ALSIF-2 	MISSED APPROACH: Climb to 4000 on heading 093° and CGT VORTAC R-336 to CGT VORTAC and hold.
RNAV 1-GPS or RADAR required for procedure entry. DME or RADAR required.		
Simultaneous approach authorized. CAT II: RVR 1000 authorized with specific OPSPEC, MSPEC, or LOA approval and use of autoland or HUD to touchdown.		

D-ATIS 135.4 282.225	CHICAGO APP CON 119.0 292.125	O'HARE TOWER 120.75 348.0	GND CON 124.125 (TWR NORTH) 118.05 (TWR SOUTH) 226.675 (ALL TWRs)	(TWR CENTER) 121.75 (OBND) 121.9 (IBND)	CLNC DEL 121.6	CPDLC
--	---	-------------------------------------	---	---	--------------------------	-------



BAIRY I-SXH 25.8 RADAR	COUPR I-SXH 22.6 RADAR	KYLAA I-SXH 19.5 RADAR	PEPAW I-SXH 16.4 RADAR	SHARN I-SXH 13.2 RADAR	RRUDA I-SXH 10.1 RADAR	RAYYY INT I-SXH 4.8 RADAR	IM
VGSI and ILS glidepath not coincident (VGSI Angle 3.00/TCH 75).							
4000 hdg 093° CGT R-336							
9000 8000 7000 6000 5000 4000 2300 2300 770							
GS 3.00° TCH 55							
CATEGORY A B C D							
S-ILS 10C CAT II RA 102/12 100 DA 769							
S-ILS 10C CAT III RVR 06							
CATEGORY II and III ILS - SPECIAL AIRCREW & AIRCRAFT CERTIFICATION REQUIRED							