

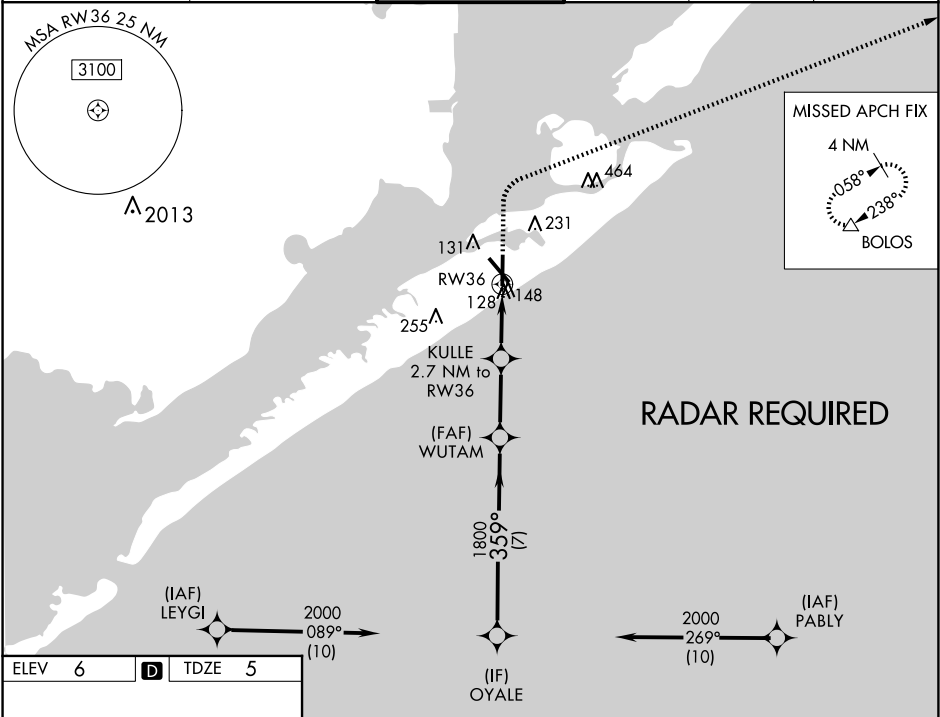
WAAS CH 48831 W36A	APP CRS 359°	Rwy Idg TDZE Apt Elev	6001 5 6
--	------------------------	-----------------------------	-------------------------------------

RNAV (GPS) RWY 36
SCHOLES INTL AT GALVESTON (GLS)

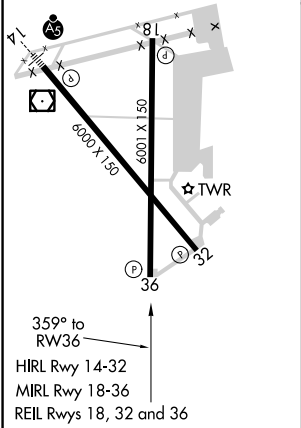
⚠ When VGSI inop, Straight-in/Circling Rwy 36 procedure NA at night. Circling NA east of Rwy 18 and northeast of Rwy 32. DME/DME RNP-0.3 NA. Helicopter visibility reduction below 1 SM NA. When local altimeter setting not received, use William P Hobby altimeter setting; increase all MDA 80 feet. Increase LP Cat C/D/E visibility 1/8 SM, LNAV Cat C/D/E visibility 1/8 SM and Circling Cat C/D/E visibility 1/4 SM.

MISSED APPROACH:
Climb to 800 then climbing right turn to 2000 direct BOLOS and hold.

ASOS 123.95	HOUSTON APP CON 134.45 284.0	GALVESTON TOWER ★ 120.575 (CTAF) 0	GND CON 118.625	CLNC DEL 135.35 (When twr closed)	UNICOM 123.05
-----------------------	--	---	---------------------------	--	-------------------------



ELEV 6	D	TDZE 5
--------	----------	--------



OYALE					
2000					
359°					
WUTAM					
1800					
3.00° TCH 45					
900					
KULLE 2.7 NM to RW36					
RW36					
7 NM 2.8 NM 2.7 NM					
CATEGORY	A	B	C	D	E
LP MDA	440-1	435 (500-1)	440-1¼	435 (500-1¼)	
LNAV MDA	460-1	455 (500-1)	460-1⅜	455 (500-1⅜)	
CIRCLING	500-1 494 (500-1)	520-1 514 (600-1)	620-1¾ 614 (700-1¾)	620-2 614 (700-2)	620-2¼ 614 (700-2¼)

SC-5, 10 JUL 2025 to 07 AUG 2025

SC-5, 10 JUL 2025 to 07 AUG 2025