
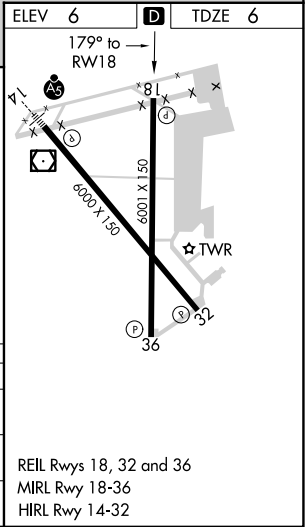
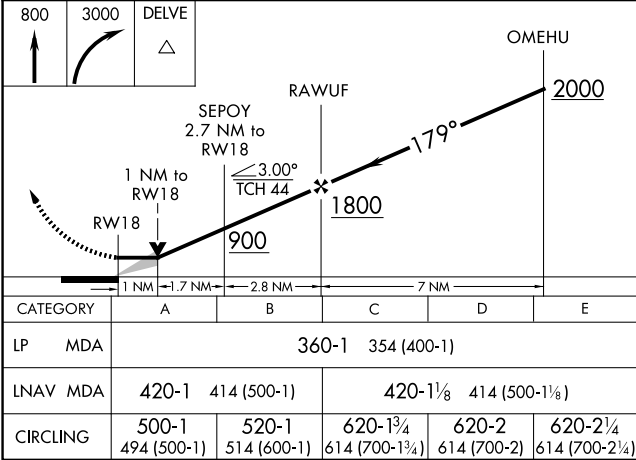
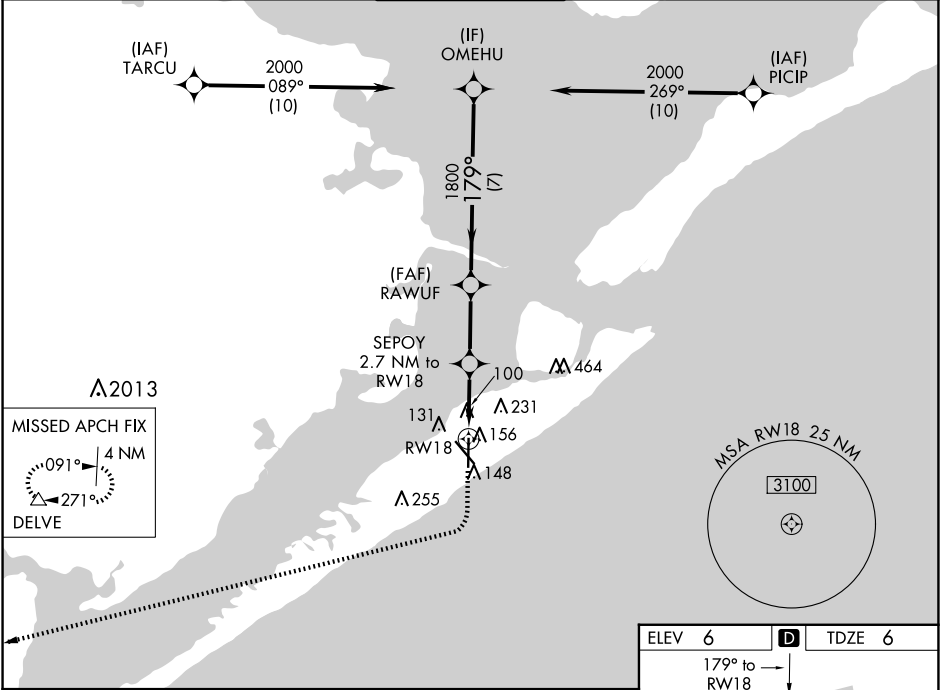


WAAS CH 82301 W18A	APP CRS 179°	Rwy Idg TDZE Apt Elev	6001 6 6
--	------------------------	-----------------------------	-------------------------------------

RNAV (GPS) RWY 18

SCHOLES INTL AT GALVESTON (GLS)

RNP APCH.			MISSED APPROACH: Climb to 800 then climbing right turn to 3000 direct DELVE and hold.			
<div><div>V</div><div>A</div></div> <div>Circling NA east of Rwy 18 and northeast of Rwy 32.</div>						
ASOS 123.95	HOUSTON APP CON 134.45 284.0	GALVESTON TOWER★ 120.575 (CTAF) 	GND CON 118.625	CLNC DEL 135.35 (When twr closed)	UNICOM 123.05	



SC-5, 10 JUL 2025 to 07 AUG 2025

SC-5, 10 JUL 2025 to 07 AUG 2025