

**TOP ALTITUDE:
ASSIGNED BY ATC**

RNAV-1 DME/DME/IRU or GPS.

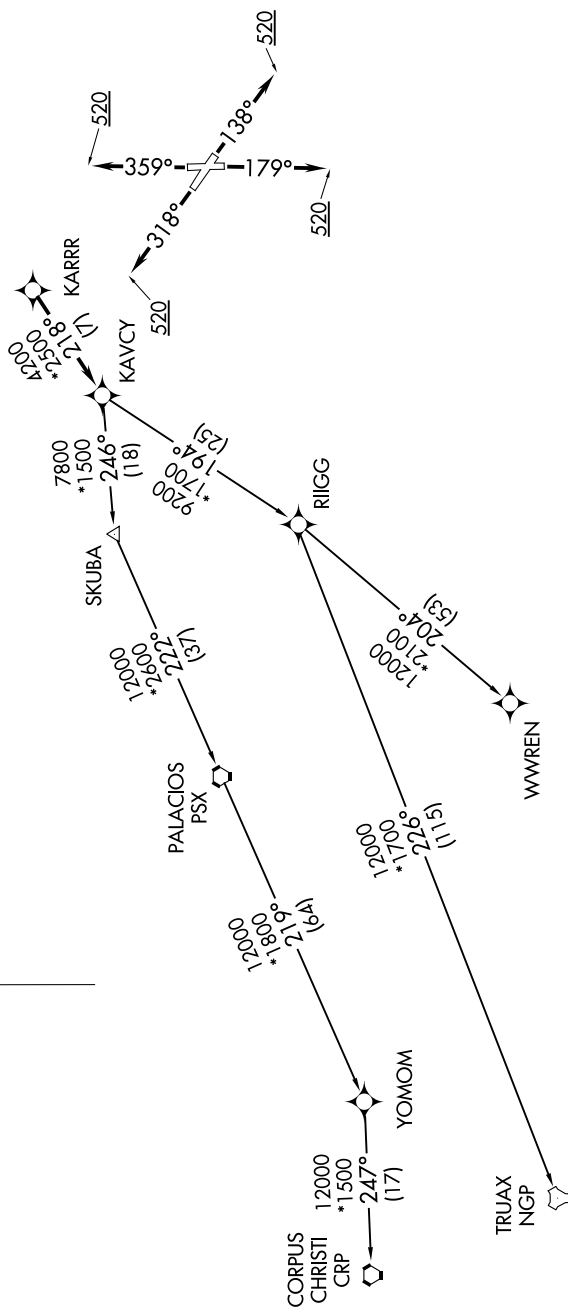
RADAR required.

ASOS
1123.95
CLINC D
1135.35
GND CO
1118.62
GALVES
1120.57
HOUSTO
1134.45

TAKEOFF MINIMUMS

Rwys 14, 18, 32, 36: Standard with minimum climb of 500' per NM to 520.

Z-



NOTE: Chart not to scale.

(NARRATIVE ON FOLLOWING PAGE)

SC-5, 10 JUL 2025 to 07 AUG 2025

KARRR SEVEN DEPARTURE (RNAV)
(KARRR7.KARRR) 29DEC22

GALVESTON, TEXAS
SCHOLES INTL AT GALVESTON (GLS)