

LOC I-GLS	APP CRS	Rwy ldg	6000
111.7	138°	TDZE	5
		Apt Elev	6

ILS or LOC RWY 14

SCHOLES INTL AT GALVESTON (GLS)

RADAR required for procedure entry at UCENU.

▼

▲ NA

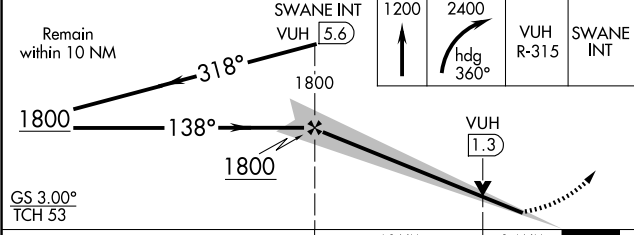
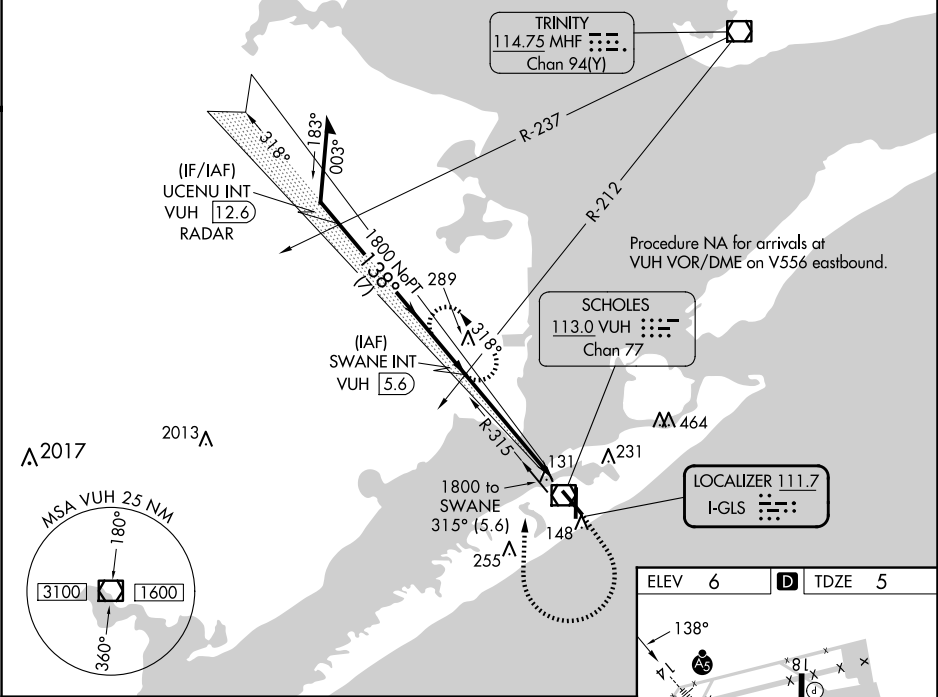
Circling NA east of Rwy 18 and northeast of Rwy 32.
For inop ALS, increase S-LOC 14 Cat A and B visibility to 1 SM. DME from VUH VOR/DME. Simultaneous reception of I-GLS and VUH DME required.

MALSR

AS

MISSED APPROACH: Climb to 1200 then climbing right turn to 2400 on heading 360° and VUH VOR/DME R-315 to SWANE INT/VUH 5.6 DME and hold, continue climb-in-hold to 2400.

ASOS	HOUSTON APP CON	GALVESTON TOWER ★	GND CON	CLNC DEL	UNICOM
123.95	134.45 284.0	120.575 (CTAF) 0	118.625	135.35 (When twr closed)	123.05



ELEV 6	TDZE 5
REIL Rwy 18, 32, and 36	
MIRL Rwy 18-36	
HIRL Rwy 14-32	
FAF to MAP 5.5 NM	
Knots	60 90 120 150 180
Min:Sec	5:30 3:40 2:45 2:12 1:50