

FRESNO, CALIFORNIA

AL-162 (FAA)

25163

WAAS CH 81803 W29A	APP CRS 292°	Rwy Ldg 9227 TDZE 333 Apt Elev 336
----------------------------------------	------------------------	---------------------------------------------------------------

RNAV (GPS) RWY 29R
FRESNO YOSEMITE INTL (FAT)

FRESNO YOSEMITE INTL (FAT)

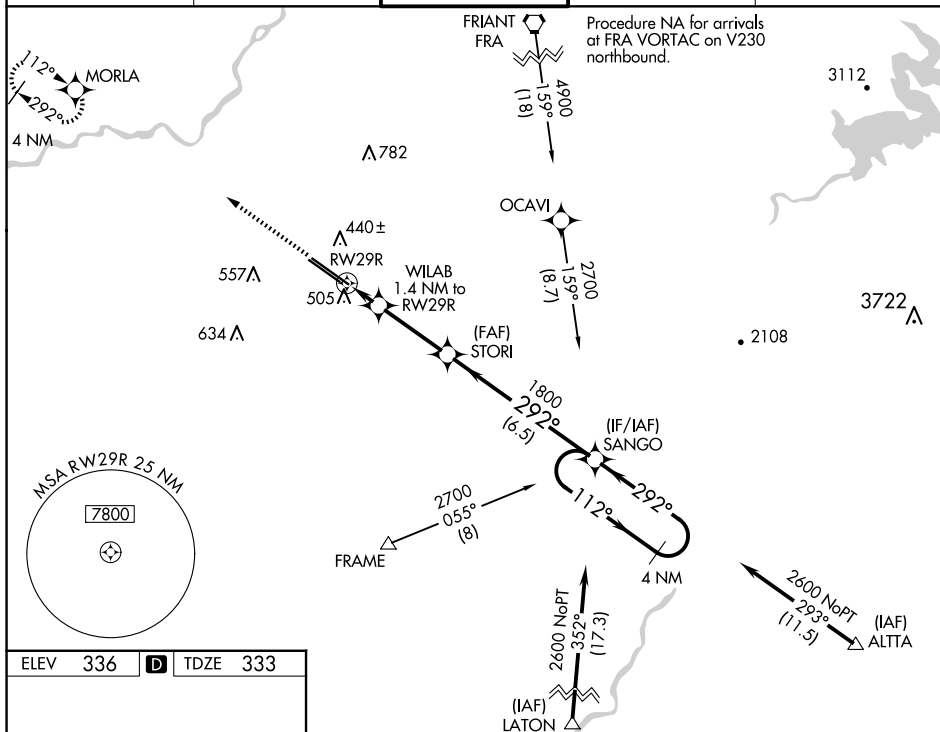
T For uncompensated Baro-VNAV systems, LNAV/VNAV NA below 0°C (32°F) or above 54°C (130°F). DME/DME RNP-0.3 NA.

ALSF-2

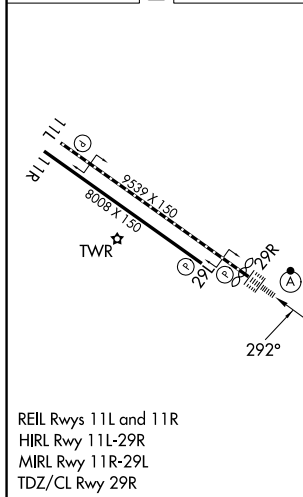


MISSED APPROACH: Climb to 2000 direct MORLA and hold.

ATIS 121.35 273.6	FRESNO APP CON 119.6 351.95	FRESNO TOWER 118.2 251.1	GND CON 121.7 348.6	CLNC DEL 124.35 348.6
----------------------	--------------------------------	-----------------------------	------------------------	--------------------------



ELEV	336	D	TDZE	333
------	-----	----------	------	-----



VGSB and RNAV glidepath not coincident (VGSB Angle 3.00°/TCH 76°)

4 NM

SANGO Holding Pattern

112°

292°

2600

STORI 1800

WILAB 1.4 NM to RW29R

RW29R

*820

1800

GP 3.00° TCH 58

1.4 NM 3 NM 6.5 NM

CATEGORY	A	B	C	D
LPV DA	533/18	200 (200-½)		
RNAV/VNAV DA	689/30	356 (400-¾)		
RNAV MDA	760/24	427 (500-½)	760/40	427 (500-¾)
C CIRCLING	820-1	484 (500-1)	920-1½ 584 (600-1½)	920-2 584 (600-2)

FRESNO, CALIFORNIA

Amdt 1B 07DEC17

36°47'N-119°43'W

FRESNO YOSEMITE INTL (FAT)

RNAV (GPS) RWY 29R

SW-2, 10 JUL 2025 to 07 AUG 2025

SW-2, 10 JUL 2025 to 07 AUG 2025