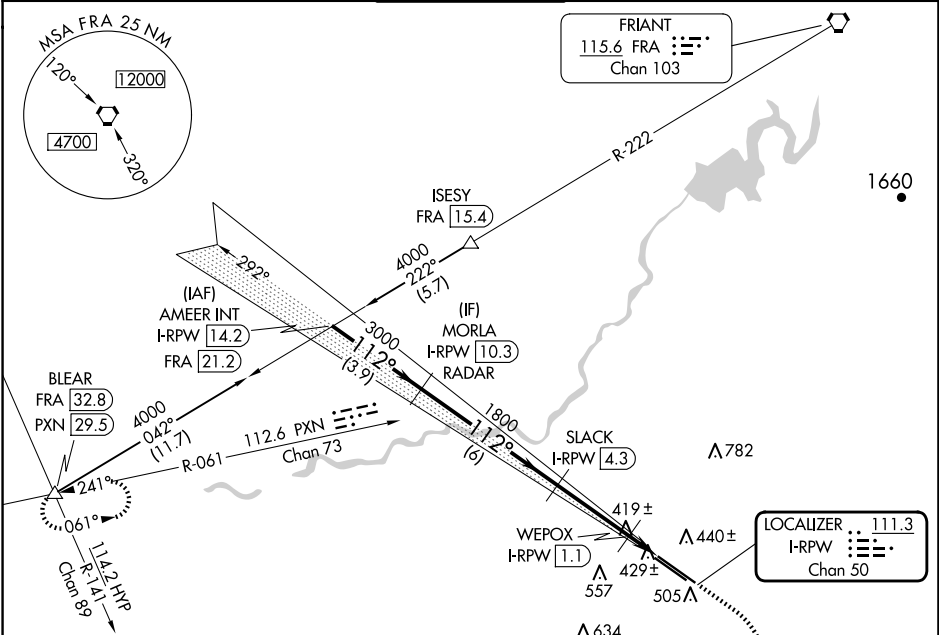


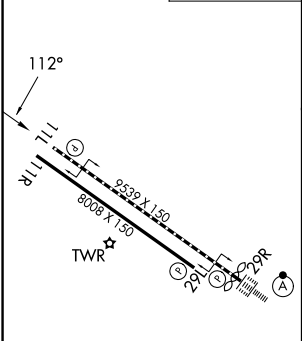
LOC/DME I-RPW 111.3 Chan 50	APP CRS 112°	Rwy Ldg 11L 9279 11R 8008 TDZE 336 Apt Elev 336
---	------------------------	---

LOC Y RWY 11L
FRESNO YOSEMITE INTL (FAT)

DME required.		MISSED APPROACH: Climb to 2000 then climbing right turn to 4900 on heading 300° and PXN VORTAC R-061 to BLEAR INT/PXN VORTAC 29.5 DME and hold.		
ATIS 121.35 273.6	FRESNO APP CON 119.6 351.95	FRESNO TOWER 118.2 251.1	GND CON 121.7 348.6	CLNC DEL 124.35 348.6



ELEV 336	D	TDZE 11L 336 TDZE 11R 333
----------	---	------------------------------



REIL Rwy 11L and 11R
HIRL Rwy 11L-29R
MIRL Rwy 11R-29L
TDZ/CL Rwy 29R

<div>AMEER INT I-RPW 14.2</div> <div>MORLA I-RPW 10.3 RADAR</div> <div>SLACK I-RPW 4.3</div> <div>WEPOX I-RPW 1.1</div> <div>I-RPW DME ANTENNA I-RPW 0.2</div>					<div>2000 ↑</div>	<div>4900 hdg 300°</div>	<div>PXN R-061</div>	<div>BLEAR △</div>	
<div>4000</div> <div>112°</div> <div>3000</div> <div>1800*</div> <div>800</div> <div>3.00°</div> <div>TCH 50</div> <div>3.9 NM</div> <div>6 NM</div> <div>3.2 NM</div> <div>1.3 NM</div>					<div>↑</div>				
CATEGORY	A	B	C	D	E				
S-LOC 11L	680/55 344 (400-1)								
SIDESTEP 11R	680-1 347 (400-1)			680-1½ 347 (400-1½)			680-2 347 (400-2)		

SW-2, 10 JUL 2025 to 07 AUG 2025

SW-2, 10 JUL 2025 to 07 AUG 2025