



FRESNO, CALIFORNIA

AL-162 (FAA)

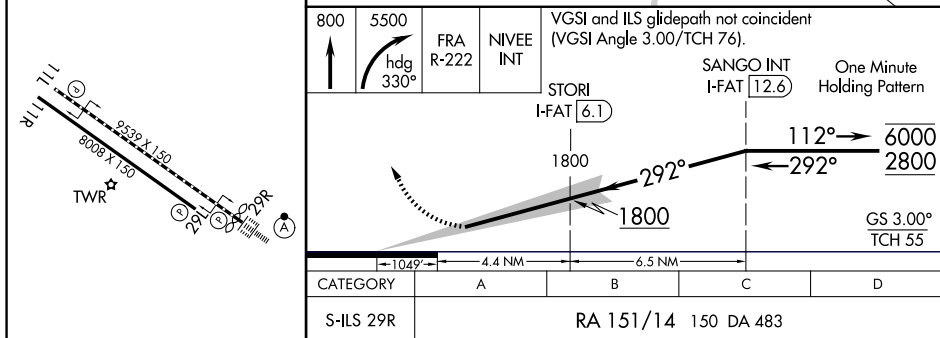
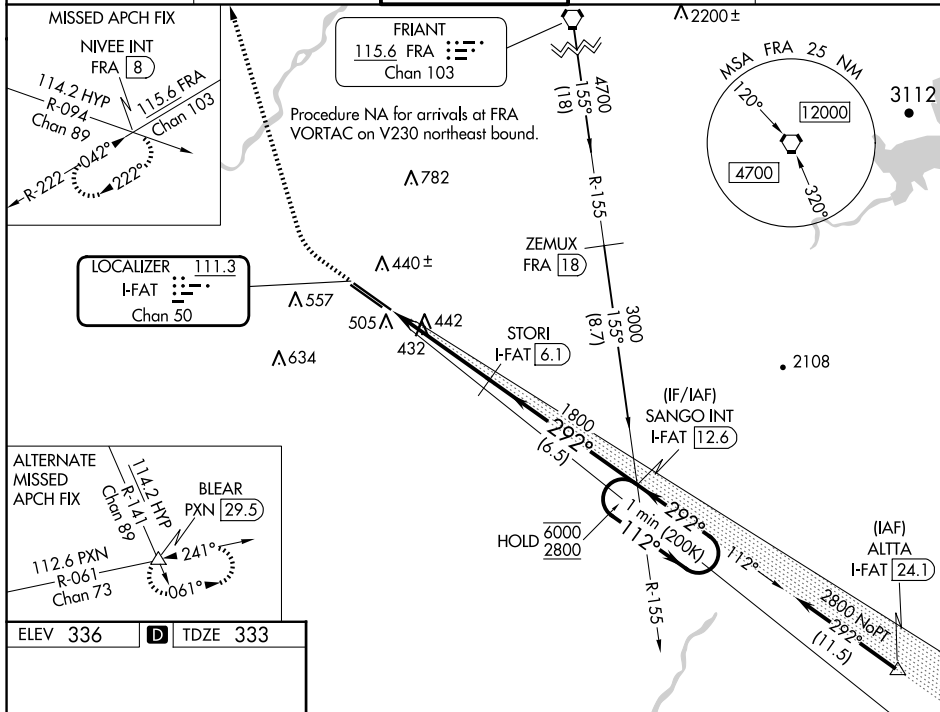
25163

LOC/DME I-FAT <b>111.3</b> Chan <b>50</b>	APP CRS <b>292°</b>	Rwy Ldg <b>9227</b> TDZE <b>333</b> Apt Elev <b>336</b>
---	------------------------	---

ILS Y RWY 29R (SA CAT I)  
FRESNO YOSEMITE INTL (FAT)

 <p>Requires specific OPSPEC, MSPEC, or LOA approval and use of HUD to DH.</p>	<p>ALSF-2</p> 	<p>MISSED APPROACH: Climb to 800 then climbing right turn to 5500 on heading 330° and FRA VORTAC R-222 to NIVEE INT/FRA 8 DME and hold, continue climb-in-hold to 5500.</p>
---	---	---

ATIS 121.35 273.6	FRESNO APP CON 119.6 351.95	FRESNO TOWER 118.2 251.1	GND CON 121.7 348.6	CLNC DEL 124.35 348.6
----------------------	--------------------------------	-----------------------------	------------------------	--------------------------



REIL Rwy 11L and 11R  
HIRL Rwy 11L-29R  
MIRL Rwy 11R-29L  
TDZ/CL Rwy 29R

SA CATEGORY I ILS - SPECIAL AIRCREW  
& AIRCRAFT CERTIFICATION REQUIRED

FRESNO, CALIFORNIA  
Amdt 39A 24MAR22

36°47'N-119°43'W

FRESNO YOSEMITE INTL (FAT)  
ILS Y RWY 29R (SA CAT I)

SW-2, 10 JUL 2025 to 07 AUG 2025