

TACAN CZQ
Chan 76

APCH CRS
307°

Rwy Idg
29R 9227
29L 8008
TDZE 29L 333
Arpt Elev 336

[USAF] FRESNO YOSEMITE INTL (KFAT)

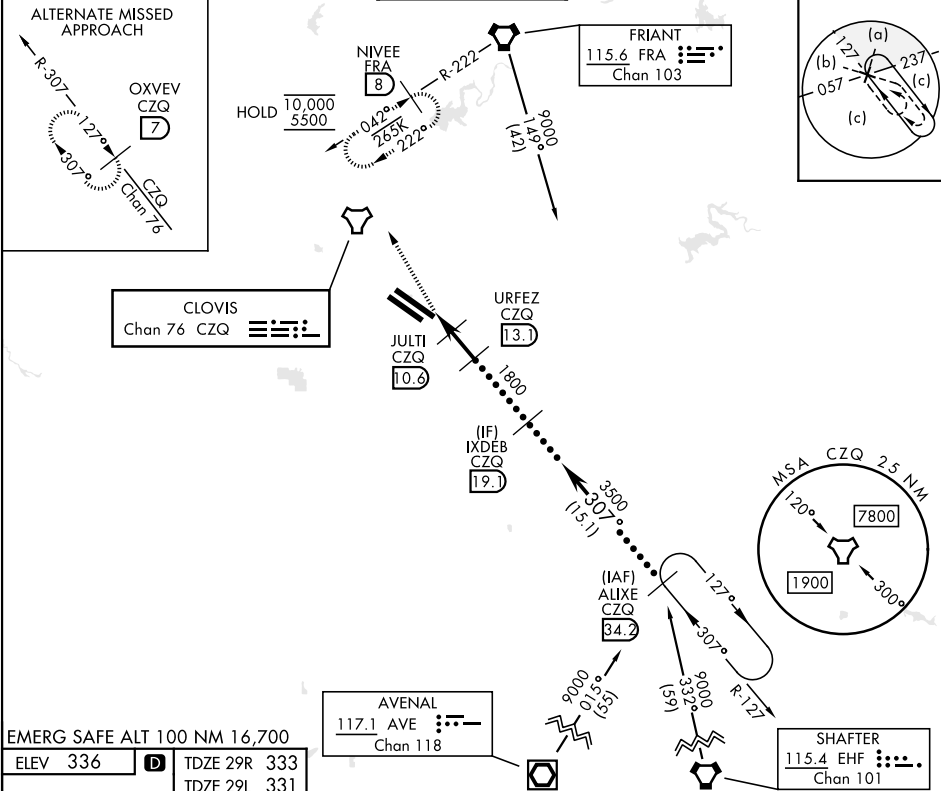
DME required

ALS-2

MISSED APPROACH: Climb to 5500 on heading 330° and FRA VORTAC R-222 to NIVEE/FRA 8 DME and hold, continue climb-in-hold to 5500.

*When ALS inop, increase CAT CDE vis to 1¼ miles.

ATIS 121.35 273.6	APP CON 132.35 323.25	TOWER 118.2 251.1	GND CON 121.7 348.6	CLNC DEL 124.35 348.6
----------------------	--------------------------	----------------------	------------------------	--------------------------



CATEGORY	C	D	E
S-29R *	760/40	427	(500-34)
SIDESTEP 29L	760-1½ 429 (500-1½)	760-2 429 (500-2)	1140-2¾ 804 (900-2¾)
CIRCLING	920-1½ 584 (600-1½)	920-2 584 (600-2)	