

HI-TACAN RWY 11L

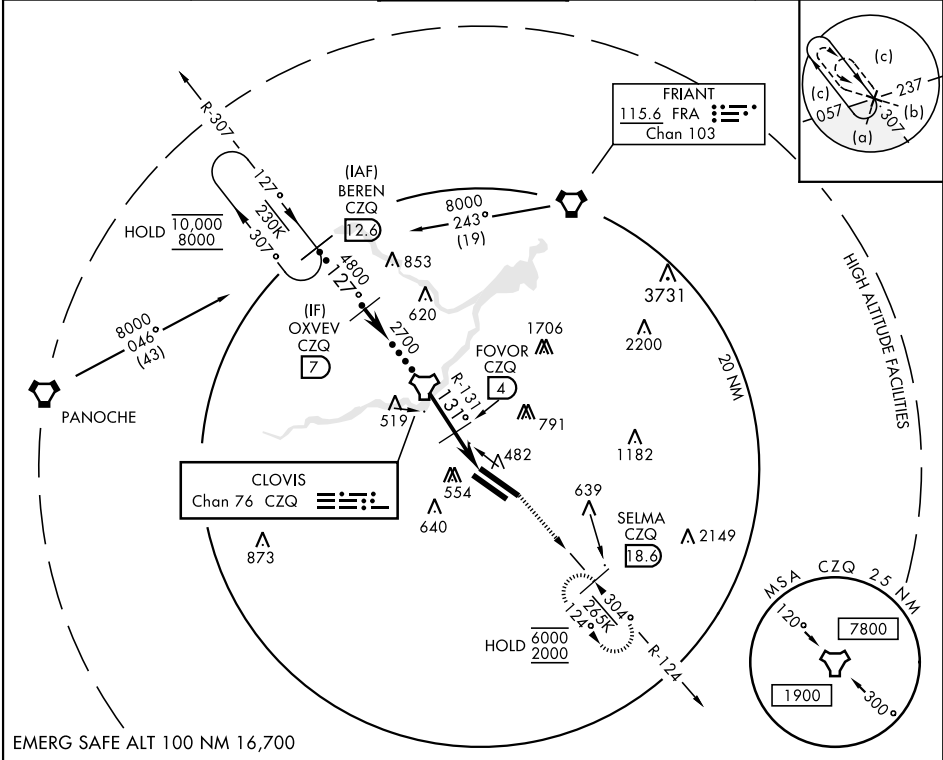
TACAN CZQ Chan 76	APCH CRS 131°	Rwy Idg 11L 9279 11R 8008 TDZE 11L 336 11R 333 Arpt Elev 336
-----------------------------	-------------------------	--

AL-162 [USAF] FRESNO YOSEMITE INTL (KFAT)

DME required.

MISSED APPROACH: Climbing left turn to 2000 on CZQ TACAN R-124 to SELMA / 18.6 DME and hold.

ATIS 121.35 273.6	APP CON 119.6 351.95	TOWER 118.2 251.1	GND CON 121.7 348.6	CLNC DEL 124.35 348.6
-----------------------------	--------------------------------	-----------------------------	-------------------------------	---------------------------------



BEREN CZQ R-307 12.9			VGSI and descent angles not coincident (VGSI Angle 3.00/TCH 50)		2000 CZQ R-124	SELMA CZQ 18.6	ELEV 336	TDZE 11L 336 TDZE 11R 333
10,000 8000			OXVEV 7		TACAN	FOVOR 4	131° 7.3 NM from FAF	Rwy 11L Idg 9279' Rwy 29R Idg 9227'
127°			4800		2700	1420	362	371
3.00° TCH 55			4 NM		3.3 NM		363	391
CATEGORY	C	D	E					
S-11L	800-1½	464	(500-1½)					
SIDESTEP 11R	800-1½ 467 (500-1½)	800-2	467 (500-2)					
CIRCLING	920-1½ 584 (600-1½)	920-2 584 (600-2)	1140-2¾ 804 (900-2¾)					

REIL Rwy 11L and 11R
HIRL Rwy 11L-29R
MIRL Rwy 11R-29L
TDZL/CL Rwy 29R

HI-TACAN RWY 11L