

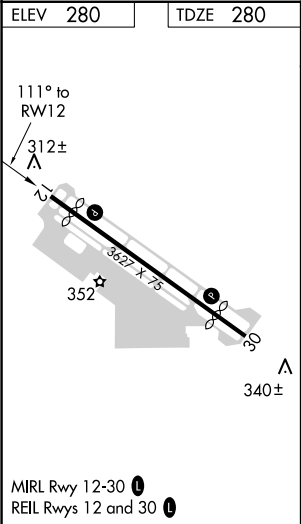
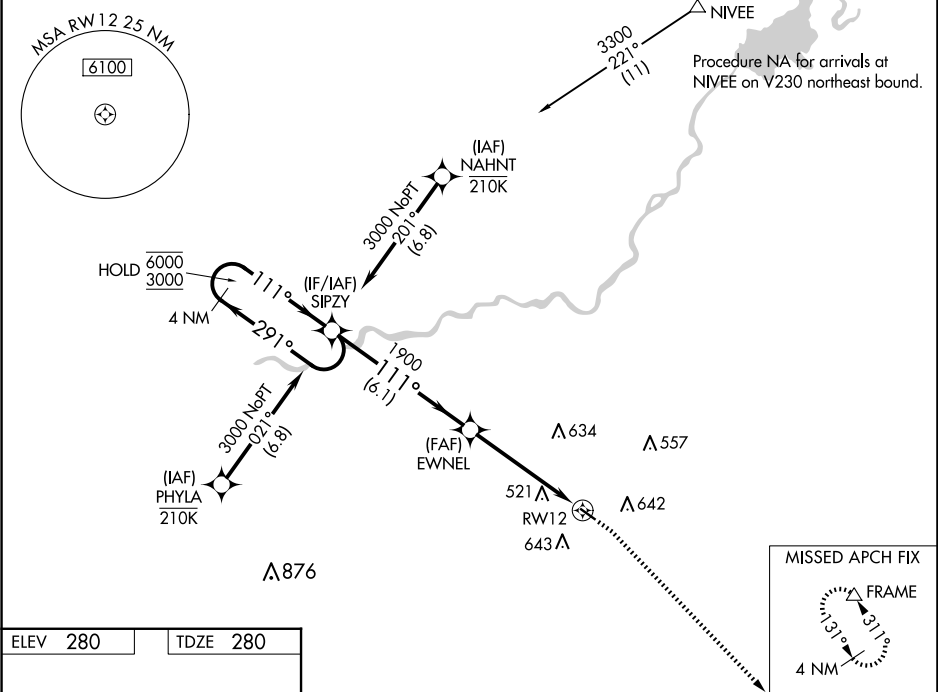
WAAS CH 49242 W12A	APP CRS 111°	Rwy Idg TDZE Apt Elev	3212 280 280
--	------------------------	-----------------------------	---

RNAV (GPS) RWY 12

FRESNO CHANDLER EXEC (FCH)

RNP APCH-GPS.	MISSED APPROACH: Climb to 800 then climbing right turn to 2000 direct FRAME and hold.
<div><div>▼</div><div>⚠</div></div> <div>Circling Rwy 30 NA at night. Rwy 12 helicopter visibility reduction below ¾ SM NA. For uncompensated Baro-VNAV systems, LNAV/VNAV NA below -1° C or above 54°C.</div>	

AWOS-3 135.225	FRESNO APP CON 119.0 323.25	CLNC DEL 119.0	UNICOM 123.0 (CTAF) 0
--------------------------	---------------------------------------	--------------------------	---------------------------------



<div>4 NM Holding Pattern</div> <div>6000 ← 291°</div> <div>3000 111° →</div> <div>GP 3.00° TCH 40</div>		<div>SIPZY</div>		<div>EWNEL</div> <div>1900</div>		<div>1.4 NM to RW12</div> <div>RW12</div>		<div>800</div> <div>2000</div> <div>FRAME</div> <div>△</div>
		6.1 NM		3.5 NM		1.4 NM		
CATEGORY		A		B		C		D
LPV DA		530-1 250 (300-1)						NA
LNAV/VNAV DA		809-1½ 529 (600-1½)						NA
LNAV MDA		780-1 500 (500-1)				780-1⅜ 500 (500-1⅝)		NA
C CIRCLING		960-1 680 (700-1)				960-2 680 (700-2)		NA