

TACAN Z RWY 18

TACAN NFW Chan 24	APCH CRS 172°	Rwy Idg 11,999 TDZE 636 Arpt Elev 650
-----------------------------	-------------------------	--

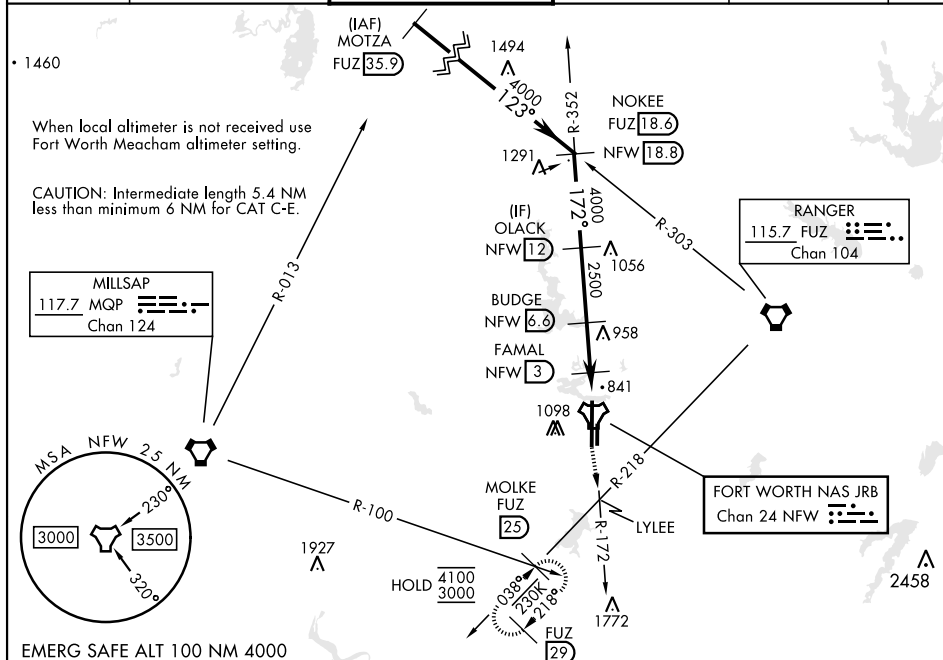
[USN] FORT WORTH NAS JRB (CARSWELL FLD) (KNFW)

FUZ VORTAC or RADAR required.

MISSED APPROACH: Climb to 3000 direct LYLEE to intercept FUZ VORTAC R-218 to MOLKE and hold.

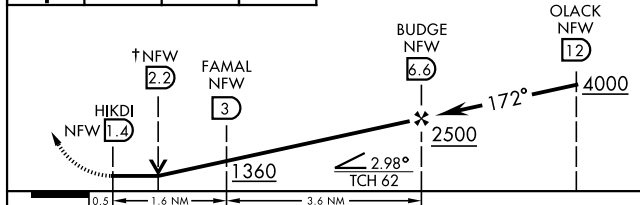
T * Circling not authorized E of Rwy 18-36.

ATIS★ 351.675	LONE STAR APP CON 125.8 257.95	NAVY FORT WORTH TOWER★ 120.950 269.325	GND CON 121.675 279.575	CLNC DEL 126.4 254.325	ASR
------------------	-----------------------------------	---	----------------------------	---------------------------	-----

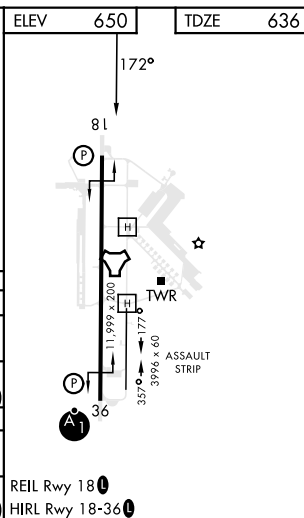


EMERG SAFE ALT 100 NM 4000

3000 ↑	LYLEE ↗	FUZ R-218 ↗	MOLKE FUZ 25	† VDP NA when using FTW altimeter setting	ELEV 650 172°	TDZE 636
-----------	------------	-------------------	--------------------	--	------------------	----------



CATEGORY	A	B	C	D	E
S-18	1100-1 464 (500-1)	1100-1 $\frac{3}{8}$ 464 (500-1 $\frac{3}{8}$)			
C CIRCLING*	1220-1 570 (600-1)	1320-1 670 (700-1)	1320-1 $\frac{1}{4}$ 670 (700-1 $\frac{1}{4}$)	1340-2 $\frac{1}{4}$ 690 (700-2 $\frac{1}{4}$)	1440-2 $\frac{3}{4}$ 790 (800-2 $\frac{3}{4}$)
FORT WORTH MEACHAM ALTIMETER					
S-18	1120-1 484 (500-1)	1120-1 $\frac{3}{8}$ 484 (500-1 $\frac{3}{8}$)			
C CIRCLING*	1240-1 590 (600-1)	1340-1 690 (700-1)	1340-2 690 (700-2)	1360-2 $\frac{1}{4}$ 710 (800-2 $\frac{1}{4}$)	1460-2 $\frac{3}{4}$ 810 (900-2 $\frac{3}{4}$)



FORT WORTH, TEXAS

32°46'N-97°26'W

FORT WORTH NAS JRB (CARSWELL FLD) (KNFW)

Orig 18MAY23

TACAN Z RWY 18

SC-2, 10 JUL 2025 to 07 AUG 2025

SC-2, 10 JUL 2025 to 07 AUG 2025