



RNAV (GPS) RWY 36

FORT WORTH NAS JRB (CARSWELL FLD) (KNFW)

WAAS CH 49487 W36A	APCH CRS 357°	Rwy Idg 11,999 TDZE 650 Arpt Elev 650
--	-------------------------	--

[USN]

RNP APCH		ALSF-1		MISSED APPROACH: Climb to 1700, then climbing left turn to 3000 direct HIPOL and hold.	
 * When ALS inop, increase vis to ¾ mile.					
ATIS★ 351.675	LONE STAR APP CON 125.8 257.95	NAVY FORT WORTH TOWER★ 120.950 269.325	GND CON 121.675 279.575	CLNC DEL 126.4 254.325	ASR/ PAR

• 1329

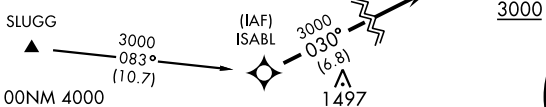
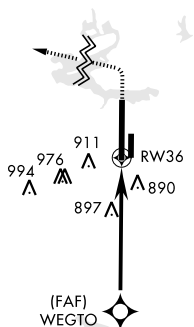
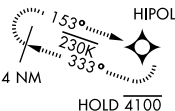
****** When ALS inop, increase CAT AB vis to 1 mile, CAT CD vis to 1 $\frac{5}{8}$ miles.

*** When ALS inop, increase vis to 1 $\frac{5}{8}$ miles,
Baro VNAV NA when local altimeter
not received.

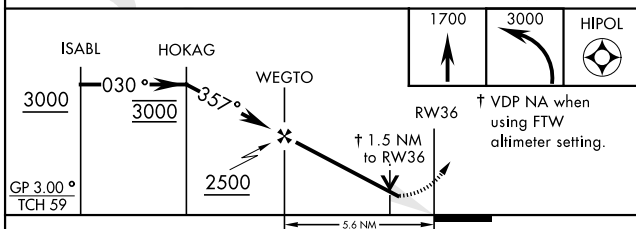
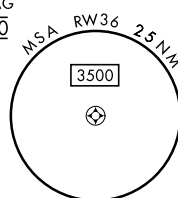
**** Circling not authorized E of Rwy 18-36.

When local altimeter is not received use Fort Worth Meacham altimeter setting.

For uncompensated BaroVNAV systems, LNAV/VNAV NA below -16°C (4°F) or above 54°C (129°F).



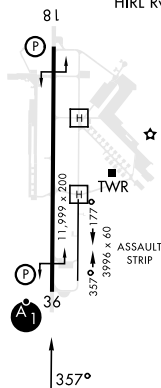
EMERG SAFE ALT 100NM 4000



CATEGORY	A	B	C	D
LPV DA *	850-½		200	(200-½)
LNAV MDA **	1200-½	550 (600-½)	1200-1⅓	550 (600-1⅓)
LNNAV/VNAV DA ***	1195-1⅓		545	(600-1⅓)
C CIRCLING ****	1220-1 570 (600-1)	1320-1 670 (700-1)	1320-1¼ 670 (700-1¼)	1340-2¼ 690 (700-2¼)
FORT WORTH MEACHAM ALTIMETER				
LPV DA *	870-½		220	(300-½)
LNNAV MDA **	1220-½	570 (600-½)	1220-1¼	570 (600-1¼)
C CIRCLING ****	1240-1 590 (600-1)	1340-1 690 (700-1)	1340-2 690 (700-2)	1360-2¼ 710 (800-2¼)

ELEV	650		TDZE	650
------	-----	--	------	-----

REIL Rwy 18 **L**
HIRL Rwy 18-36 **L**



FORT WORTH, TEXAS

32°46'N-97°26'W

FORT WORTH NAS JRB (CARSWELL FLD) (KNFW)

Amdt 2 18MAY23

RNAV (GPS) RWY 36

SC-2, 10 JUL 2025 to 07 AUG 2025

SC-2, 10 JUL 2025 to 07 AUG 2025