

## RNAV (GPS) RWY 18

[USN] FORT WORTH NAS JRB (CARSWELL FLD) (KNFW)

|  |                         |  |
|--|-------------------------|--|
| WAAS<br>CH <b>71215</b><br><b>W18A</b> | APCH CRS<br><b>177°</b> | Rwy Idg <b>11,999</b><br>TDZE <b>636</b><br>Arpt Elev <b>650</b> |
|--|-------------------------|--|

[USN]

FORT WORTH NAS JRB (CARSWELL FLD) (KNFW)

RNP APCH

**T** \* Circling not authorized E of Rwy 18-36.  
 \*\* Baro VNAV NA when local altimeter not received.

**MISSED APPROACH:** Climb to 1700, then climbing right turn to 3000 direct MOLKE and hold.

|                  |                                   |   |                            |                           |             |
|------------------|-----------------------------------|---|----------------------------|---------------------------|-------------|
| ATIS★<br>351.675 | LONE STAR APP CON<br>125.8 257.95 | NAVY FORT WORTH TOWER★<br>120.950 269.325 | GND CON<br>121.675 279.575 | CLNC DEL<br>126.4 254.325 | ASR/<br>PAR |
|------------------|-----------------------------------|---|----------------------------|---------------------------|-------------|

1273

When local altimeter is not received use Fort Worth Meacham altimeter setting.

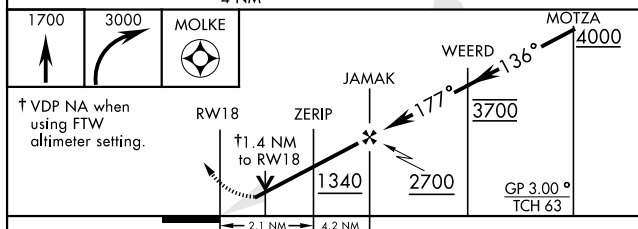
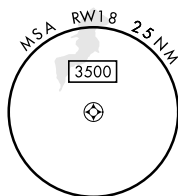
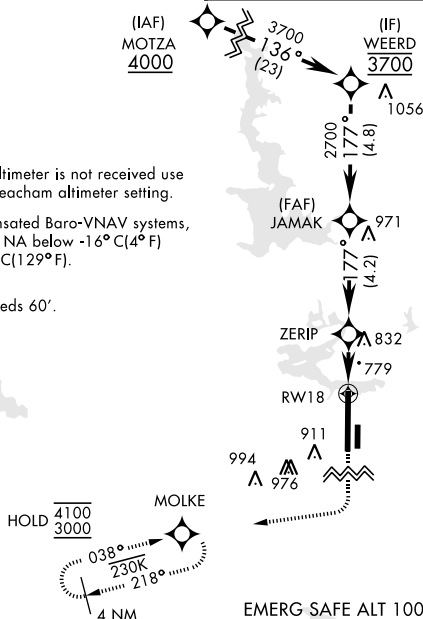
For uncompensated Baro-VNAV systems,  
LNAV/VNAV NA below -16°C (4°F)  
or above 54°C (129°F).

CAUTION:  
LPV TCH exceeds 60'.

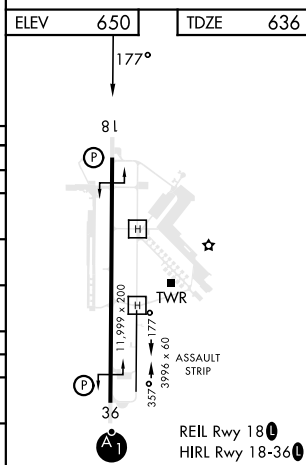
**CAUTION:** Wheel crossing height for height group 1 (53') is higher than the maximum 50'. Wheel crossing height group 1 includes general aviation, small commuters, corporate turbojets, T-38, C-12, C-20, C-21 T-1, fighter jets, UC-35, T-3, T-6 aircraft.

SC-2, 10 JUL 2025 to 07 AUG 2025

SC-2, 10 JUL 2025 to 07 AUG 2025



| CATEGORY                     | A                     | B   | C  | D  |
|------------------------------|-----------------------|---|--|--|
| LPV DA                       | 836- $\frac{3}{4}$    | 200   | (200- $\frac{3}{4}$ )                              |  |
| LNNAV/VNAV DA**              | 1079-1 $\frac{3}{8}$  | 443   | (500-1 $\frac{3}{8}$ )                             |  |
| LNNAV MDA                    | 1120-1 484 (500-1)    | 1120-1 $\frac{3}{8}$ 484 (500-1 $\frac{3}{8}$ ) |  |  |
| <b>C</b> CIRCLING*           | 1220-1<br>570 (600-1) | 1320-1<br>670 (700-1)                           | 1320-1 $\frac{3}{4}$<br>670 (700-1 $\frac{3}{4}$ ) | 1340-2 $\frac{1}{4}$<br>690 (700-2 $\frac{1}{4}$ ) |
| FORT WORTH MEACHAM ALTIMETER |                       |   |  |  |
| LPV DA                       | 856- $\frac{3}{4}$    | 220   | (300- $\frac{3}{4}$ )                              |  |
| LNNAV MDA                    | 1140-1 504 (500-1)    | 1140-1 $\frac{3}{8}$ 504 (500-1 $\frac{3}{8}$ ) |  |  |
| <b>C</b> CIRCLING*           | 1240-1<br>590 (600-1) | 1340-1<br>690 (700-1)                           | 1340-2<br>690 (700-2)                              | 1360-2 $\frac{1}{4}$<br>710 (800-2 $\frac{1}{4}$ ) |



FORT WORTH, TEXAS

32°46'N-97°26'W

FORT WORTH NAS JRB (CARSWELL FLD) (KNFW)

Amdt 2 18MAY23

## RNAV (GPS) RWY 18