


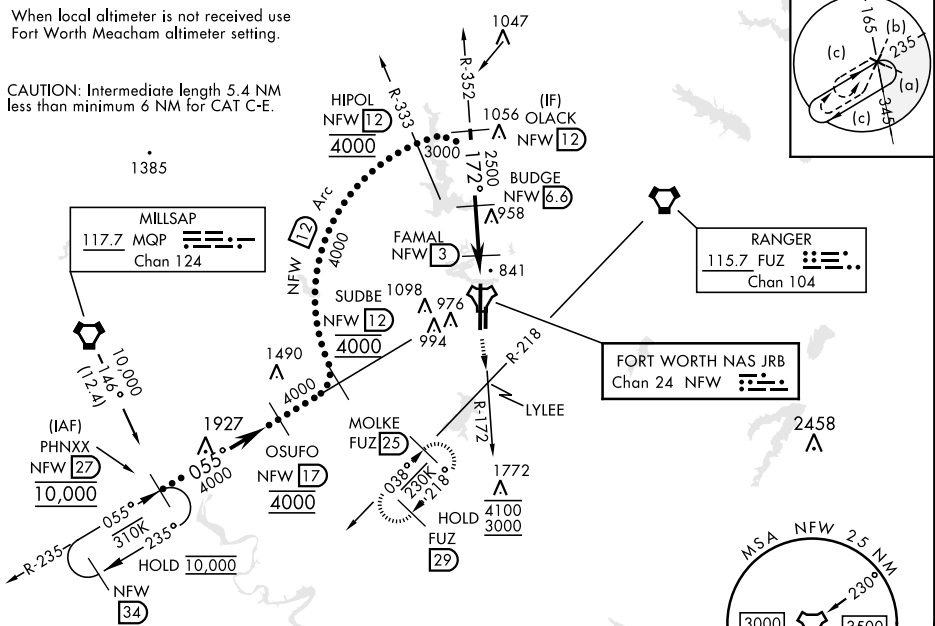
## HI-TACAN Y RWY 18

TACAN NFW Chan <b>24</b>	APCH CRS <b>172°</b>	Rwy ldg <b>11,999</b> TDZE <b>636</b> Arpt Elev <b>650</b>	[USN]	FORT WORTH NAS JRB (CARSWELL FLD) (KNFW)
FUZ VORTAC or RADAR required.			MISSED APPROACH: Climb to 3000 direct LYLEE to intercept FUZ VORTAC R-218 to MOLKE and hold.	
 * Circling not authorized E of Rwy 18-36.				

ATIS★ 351.675	LONE STAR APP CON 125.8 257.95	NAVY FORT WORTH TOWER★ 120.950 269.325	GND CON 121.675 279.575	CLNC DEL 126.4 254.325	ASR/ PAR
------------------	-----------------------------------	---	----------------------------	---------------------------	-------------

When local altimeter is not received use Fort Worth Meacham altimeter setting.

**CAUTION:** Intermediate length 5.4 NM less than minimum 6 NM for CAT C-E.



EMERG SAFE ALT 100 NM 4000

† VDP NA when using FTW altimeter setting

Diagram details: OLACK NFW (12) at 3000, BUDGE NFW (6.6) at 2500, FAMAL NFW (3) at 1360, HIKDI NFW (1.4) at 2200. Distances: 3.6 NM, 1.6 NM. Angle: 172°. Altitude change: 2.98' TCH 62.

3000	LYLEE	FUZ R-218	MOLKE FUZ (25)
------	-------	-----------	----------------

CATEGORY	C	D	E
S-18	1100-1½	464 (500-1½)	
CIRCLING*	1320-1¾ 670 (700-1¾)	1340-2¼ 690 (700-2¼)	1440-2¾ 790 (800-2¾)

FORT WORTH MEACHAM ALTIMETER

S-18	1120-1½ 484 (500-1½)	
CIRCLING*	1340-2 690 (700-1)	1460-2¾ 810 (900-2¾)

FORT WORTH, TEXAS

32°46'N-97°26'W

FORT WORTH NAS JRB (CARSWELL FLD) (KNFW)

Orig 18MAY23

## HI-TACAN Y RWY 18

SC-2, 10 JUL 2025 to 07 AUG 2025