


HI-ILS Y or LOC Y RWY 36

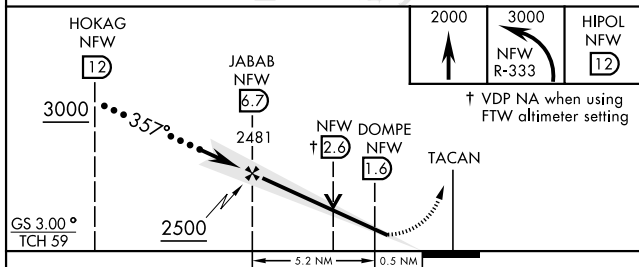
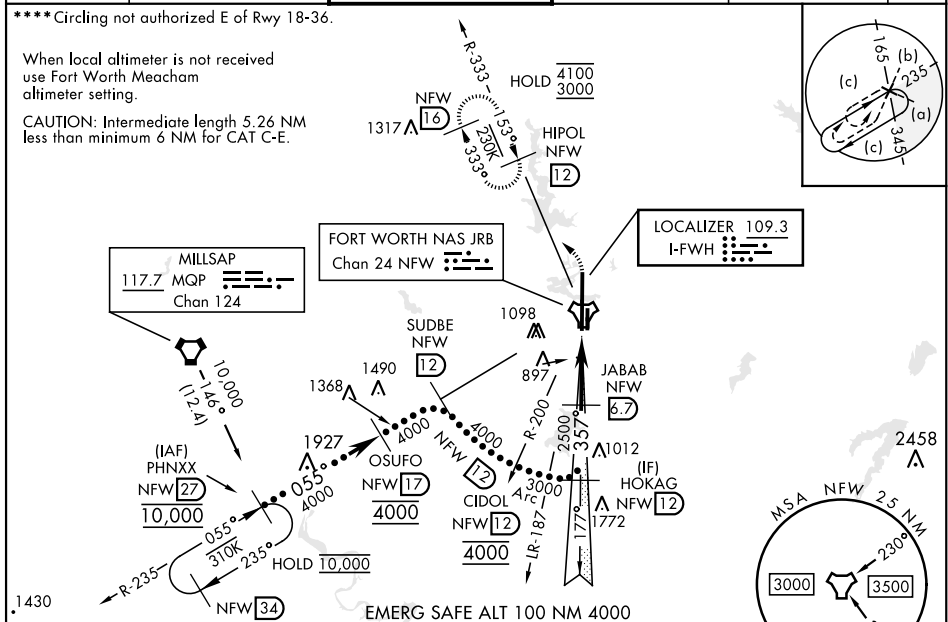
LOC I-FWH <b>109.3</b>	APCH CRS <b>357°</b>	Rwy Idg <b>11,999</b> TDZE <b>650</b> Arprt Elev <b>650</b>	[USN]	FORT WORTH NAS JRB (CARSWELL FLD) (KNFW)	
TACAN required			ALSF-1 	MISSED APPROACH: Climb to 2000, then climbing left turn to 3000 to intercept NFW TACAN R-333 to HIPOL and hold.	
▼ * When ALS inop, increase vis to ¾ mile. ** When ALS inop, increase vis to 1½ miles. *** When ALS inop, increase vis to 1¾ miles.					

ATIS★ 351.675	LONE STAR APP CON 125.8 257.95	NAVY FORT WORTH TOWER★ 120.950 269.325	GND CON 121.675 279.575	CLNC DEL 126.4 254.325	ASR/ PAR
------------------	-----------------------------------	---	----------------------------	---------------------------	-------------

\*\*\*\* Circling not authorized E of Rwy 18-36.

When local altimeter is not received  
use Fort Worth Meacham  
altimeter setting.

**CAUTION:** Intermediate length 5.26 NM less than minimum 6 NM for CAT C-E.



CATEGORY	C	D	E
S-ILS 36 *	850-1/2	200	(200-1/2)
S-LOC 36 **	1180-1	530	(600-1)
<b>C</b> CIRCLING ****	1320-1 3/4 670 (700-1 3/4)	1340-2 1/4 690 (700-2 1/4)	1440-2 3/4 790 (800-2 3/4)
FORT WORTH MEACHAM ALTIMETER			
S-ILS 36 *	870-1/2	220	(300-1/2)
S-LOC 36 ***	1200-1 1/8	550	(600-1 1/8)
<b>C</b> CIRCLING ****	1340-2 690 (700-2)	1360-2 1/4 710 (800-2 1/4)	1460-2 3/4 810 (900-2 3/4)

ELEV	650	TDZE	650
------	-----	------	-----

REIL Rwy 18   
 HIRL Rwy 18-36

FAF to MAP 5.2 NM					
Knots	120	140	160	180	200
Min:Sec	2:33	2:11	1:55	1:42	1:32

FORT WORTH, TEXAS

32° 46' N-97° 26' W

FORT WORTH NAS JRB (CARSWELL FLD) (KNFW)

Orig 18MAY23

HI-ILS Y or LOC Y RWY 36