

LOC I-NFW <b><u>108.7</u></b>	APCH CRS <b><u>177°</u></b>	Rwy Idg <b><u>11,999</u></b> TDZE <b><u>636</u></b> Apt Elev <b><u>650</u></b>	[USN]	FORT WORTH NAS JRB (CARSWELL FLD) (KNFW)
----------------------------------	--------------------------------	--	-------	--

MISSED APPROACH: Climb to 3000 direct LYLEE to intercept  
FUZ VORTAC R-218 to MOLKE and hold.

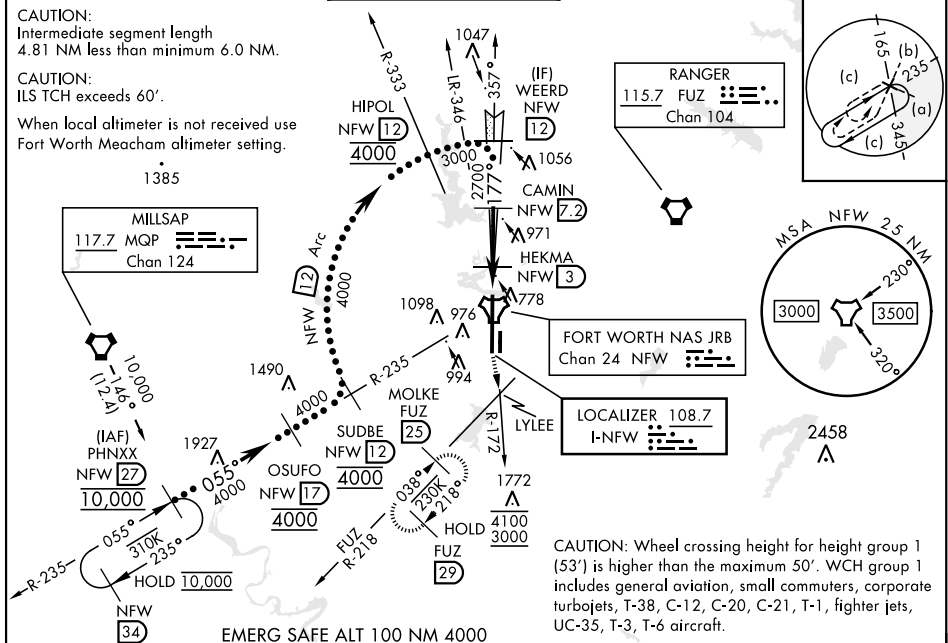
\* Circling not authorized E of Rwy 18-36.

ATIS★	LONE STAR APP CON	NAVY FORT WORTH TOWER★	GND CON	CLNC DEL	ASR/ PAR
351.675	125.8 257.95	120.950 269.325	121.675 279.575	126.4 254.325	

**CAUTION:**  
Intermediate segment length  
4.81 NM less than minimum 6.0 NM.

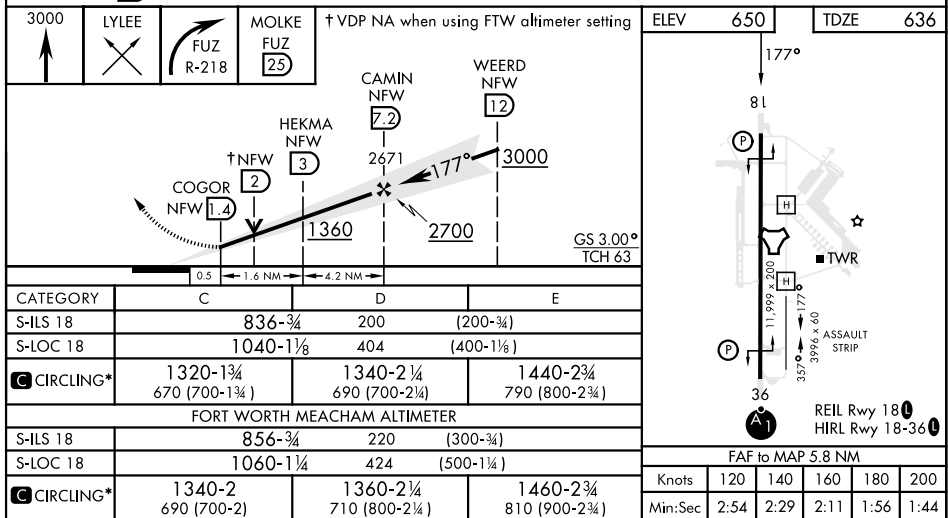
CAUTION:  
ILS TCH exceeds 60'.

When local altimeter is not received use Fort Worth Meacham altimeter setting.



**CAUTION:** Wheel crossing height for height group 1 (53') is higher than the maximum 50'. WCH group 1 includes general aviation, small commuters, corporate turbojets, T-38, C-12, C-20, C-21, T-1, fighter jets, UC-35, T-3, T-6 aircraft.

EMERG SAFE ALT 100 NM 4000



FORT WORTH, TEXAS

32° 46' N-97° 26' W

FORT WORTH NAS JRB (CARSWELL FLD) (KNFW)

## HI-ILS Y or LOC Y RWY 18