

LOC I-UXT 109.9 Chan 36	APP CRS 344°	Rwy Idg TDZE Apt Elev	7455 680 710
---	------------------------	-----------------------------	---

ILS or LOC RWY 34

FORT WORTH MEACHAM INTL (FTW)

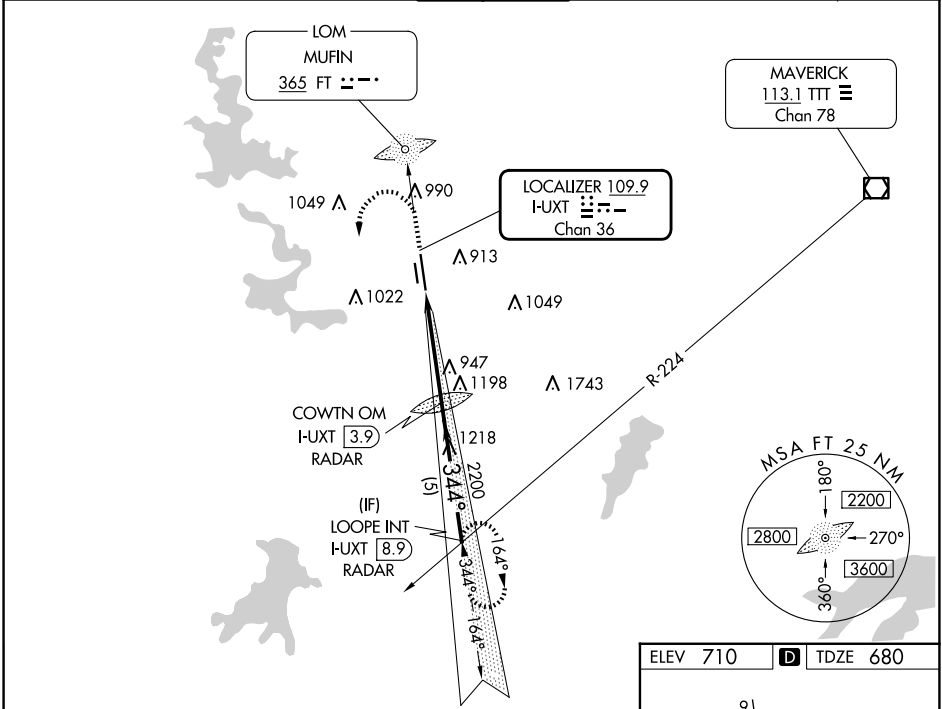
▼

Inoperative table does not apply to S-LOC 34 Cat C.

MALS

MISSED APPROACH : Climb to 1500, then climbing left turn to 2800 via I-UXT south course to LOOPE Int/ I-UXT 8.9 DME and hold.

ATIS 120.7	LONE STAR APP CON (North) 118.1 306.95 (South) 135.975 379.9	MEACHAM TOWER 118.3 257.8	GND CON 121.9	CLNC DEL 124.65
----------------------	--	-------------------------------------	-------------------------	---------------------------



RADAR REQUIRED

Λ 1772

1500

2800

I-UXT south crs

LOOPE INT

COWTN OM I-UXT 3.9 RADAR

LOOPE INT I-UXT 8.9 RADAR

*LOC only.

I-UXT 1.1

2058

344°

344°*

2800

GS 3.00°

TCH 60

1.3

2.8 NM

5 NM

CATEGORY	A	B	C	D
S- ILS 34	880-3/4 200 (200-3/4)			
S-LOC 34	1200-3/4 520 (500-3/4)	1200-1 1/2 520 (500-1 1/2)	1200-1 3/4 520 (500-1 3/4)	
CIRCLING	1260-1 550 (600-1)	1280-1 570 (600-1)	1340-1 3/4 630 (700-1 3/4)	1500-2 1/2 790 (800-2 1/2)

ELEV 710

TDZE 680

91

7500 X 150

4005 X 75

35

34

344°

HIRL Rwy 16-34

MIRL Rwy 17-35

FAF to MAP 4.1 NM

Knots	60	90	120	150	180
Min:Sec	4:06	2:44	2:03	1:38	1:22

FORT WORTH, TEXAS

Amdt 2A 18JUN20

32°49'N-97°22'W

FORT WORTH MEACHAM INTL (FTW)

ILS or LOC RWY 34