

APP CRS  
056°

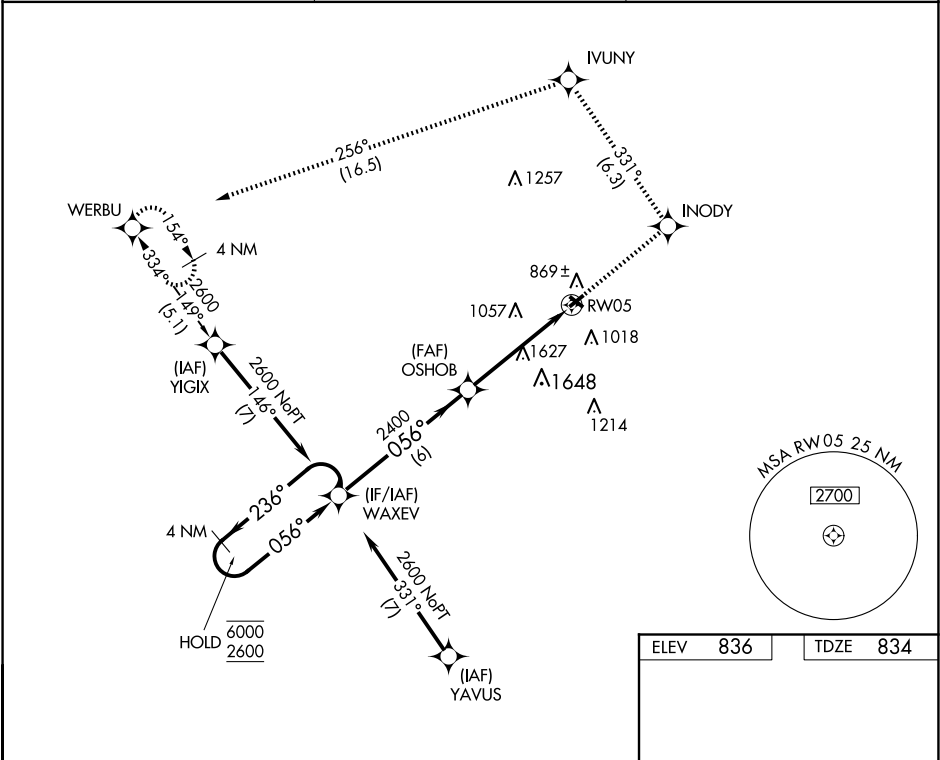
Rwy Ldg  
TDZE  
Apt Elev

2925  
834  
836

RNAV (GPS) RWY 5

SMITH FLD (SMD)

RNP APCH - GPS.		MISSED APPROACH: Climb to 2700 direct INODY and on track 331° to IVUNY and on track 256° to WERBU and hold.
<div>▼</div> <div>▲</div> <div>NA</div> <div>❄ -22°C</div>	Rwy 5 helicopter visibility reduction below ¾ NA. Circling to Rwy 13/31 NA at night. When local altimeter setting not received, use FWA altimeter setting and increase all MDAs 40 feet. VDP NA with FWA altimeter setting.	
AWOS-3 124.55	FORT WAYNE APP CON 127.2 284.6	UNICOM 122.8 (CTAF) 0



4 NM Holding Pattern

2700 INODY

tr 331° IVUNY

tr 256° WERBU

WAXEV

Visual Segment - Obstacles.

6000 ← 236°

2600 → 056°

056°

OSHOB

2.4 NM to RW05

RW05

6 NM

2.5 NM

2.4 NM

VGSI and descent angles not coincident (VGSI Angle 4.00/TCH 43).

2400

CATEGORY	A	B	C	D
LNNAV MDA	1880-1¼ 1046 (1100-1¼)	1880-1½ 1046 (1100-1½)	1880-3 1046 (1100-3)	NA
CIRCLING	1880-1¼ 1044 (1100-1¼)	1880-1½ 1044 (1100-1½)	1940-3 1104 (1200-3)	NA

MIRL Rwy 5-23 and 13-31 0