

25163

RNAV (GPS) RWY 31
SMITH FLD (SMD)

AWOS-3 124.55	FORT WAYNE APP CON 127.2 284.6	UNICOM 122.8 (CTAF) 0
-------------------------	--	---------------------------------

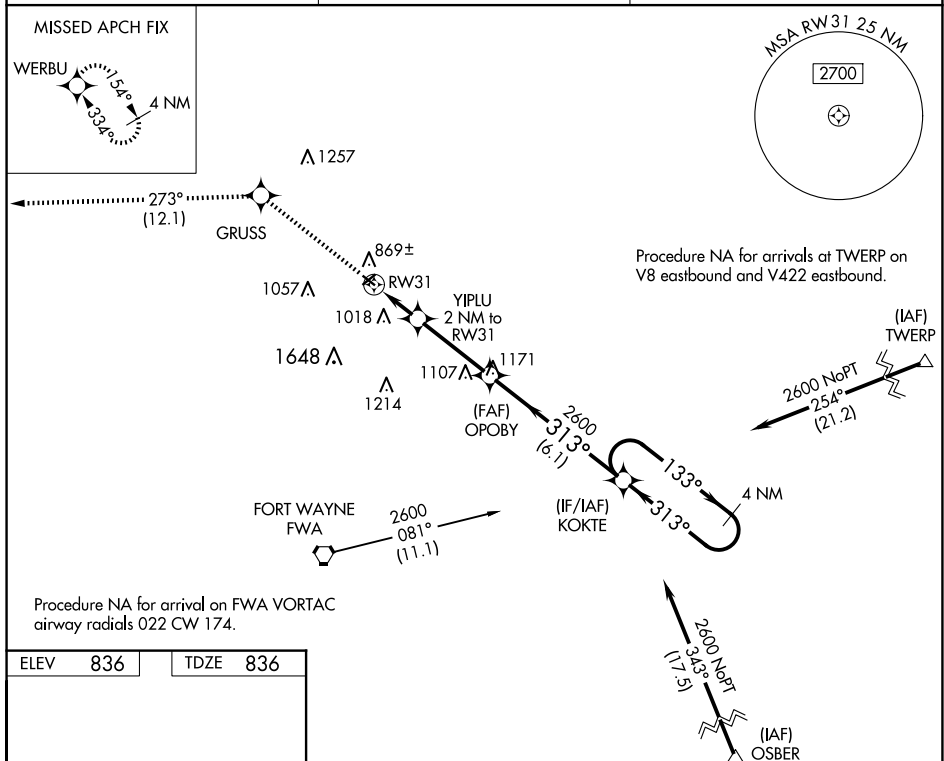


Diagram illustrating the MIRL 4 NM Holding Pattern. The pattern is defined by a 313° heading. Key features include:

- Visual Segment - Obstacles: 2700, GRUSS, WERBU, OPOBY, KOKTE.
- YIPLU 2 NM to RW31.
- RW31.
- 1500.
- 2600.
- 313°.
- 133°.
- 2600.
- 313°.
- 4 NM Holding Pattern.
- MIRL Rwy 5-23 and 13-31.

SMITH FLD (SMD)
RNAV (GPS) RWY 31

EC-2, 10 JUL 2025 to 07 AUG 2025

EC-2. 10 JUL 2025 to 07 AUG 2025