

WAAS CH 65738 W23A	APP CRS 236°	Rwy Ldg TDZE Apt Elev	3035 834 836
--	------------------------	-----------------------------	---

RNAV (GPS) RWY 23
SMITH FLD (SMD)

RNP APCH - GPS.



A NA

 -22°C

Rwy 23 helicopter visibility reduction below 1 SM NA. Circling to Rwy 13/31 NA at night. When local altimeter setting not received, use FWA altimeter setting and increase all MDAs 40 feet and LNAV visibility Cat C $\frac{1}{8}$ SM and LP visibility Cat C $\frac{1}{8}$ SM.

MISSED APPROACH: Climb to 2700 direct JISUD and on track 294° to WERBU and hold.

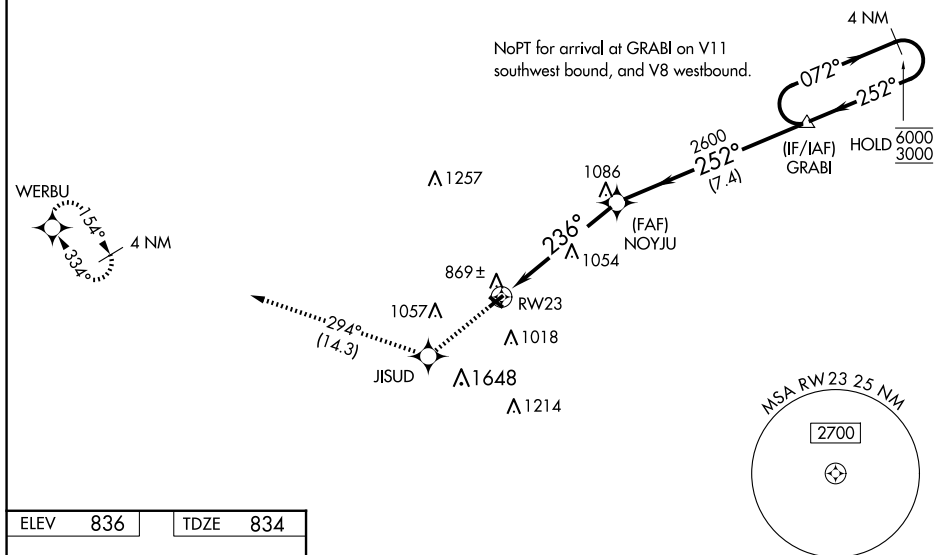
AWQS-3

124.55

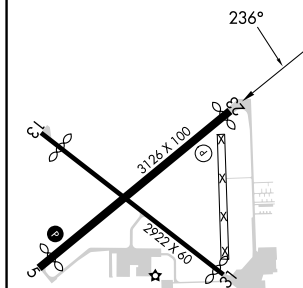
FORT WAYNE APP CON

127.2 284.6

UNICOM

122.8 (CTAF) **L**

ELEV	836		TDZE	834
------	-----	--	------	-----



MIRL Rwy 5-23 and 13-31 L

FORT WAYNE, IN
Amdt 2 17APR25

41°09'N-85°09'W

SMITH FLD (SMD)

RNAV (GPS) RWY 23