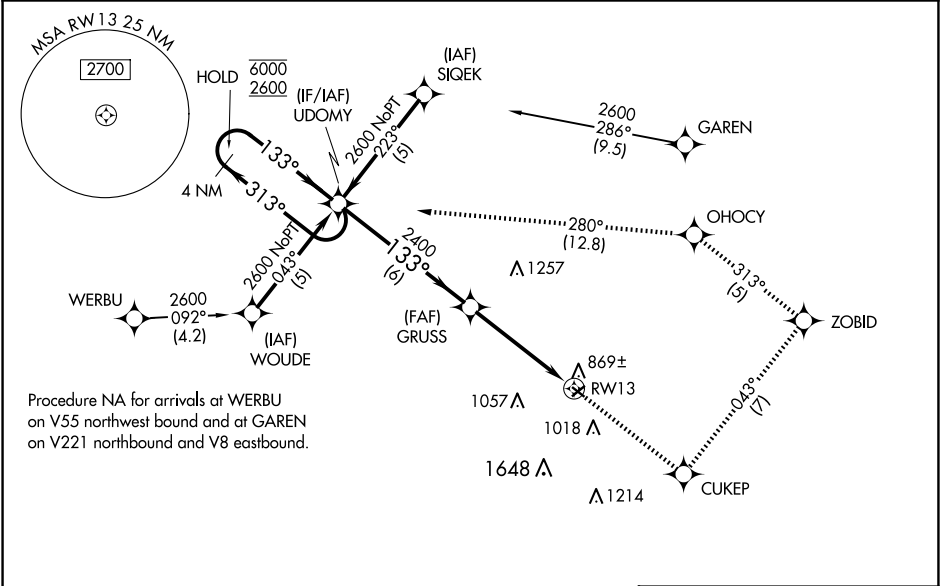


WAAS CH <b>69220</b> <b>W13A</b>	APP CRS <b>133°</b>	Rwy Ldg TDZE <b>836</b> Apt Elev <b>836</b>
--	------------------------	---

RNAV (GPS) RWY 13

SMITH FLD (SMD)

RNP APCH. ▼ ▲ NA ☄ -22°C Procedure NA at night. Rwy 13 helicopter visibility reduction below 1 SM NA. For uncompensated Baro-VNAV systems, LNAV/VNAV NA below -16°C or above 54°C. When local altimeter setting not received, use Fort Wayne Intl altimeter setting: increase LPV DA to 1162 feet; LNAV/VNAV DA to 1435 feet; increase all MDA 40 feet and LNAV Cat C visibility ¼ SM. Baro-VNAV NA when using Fort Wayne Intl altimeter setting.		MISSED APPROACH: Climb to 2600 direct CUKEP and on track 043° to ZOBID and on track 313° to OHOCY and on track 280° to UDOMY and hold.
AWOS-3 <b>124.55</b>	FORT WAYNE APP CON <b>127.2 284.6</b>	UNICOM <b>122.8 (CTAF) 0</b>



ELEV 836		TDZE 836						
2600 ↑		CUKEP ✱	tr 043°	ZOBID ✱	tr 313°	OHOCY ✱	tr 280°	UDOMY ✱
4 NM Holding Pattern UDOMY								
6000 2600		← 313° → 133°		133°		GRUSS 2400	RW13	
GP 3.00° TCH 40				2400		6 NM		4.7 NM
CATEGORY	A	B	C	D				
LPV DA	1135-1		299 (300-1)		NA			
LNAV/VNAV DA	1408-2		572 (600-2)		NA			
LNAV MDA	1340-1	504 (600-1)		1340-1½ 504 (600-1½)		NA		
CIRCLING	1400-1	564 (600-1)		1940-3 1104 (1200-3)		NA		
					MIRL Rwy 5-23 and 13-31			

MIRL Rwy 5-23 and 13-31 0