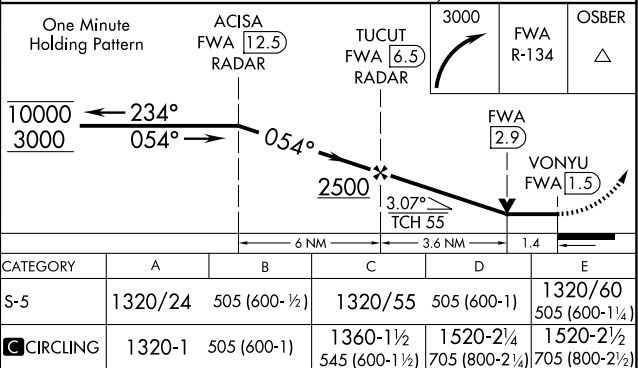
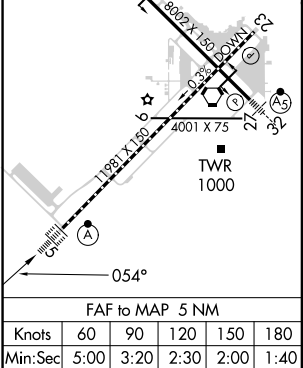
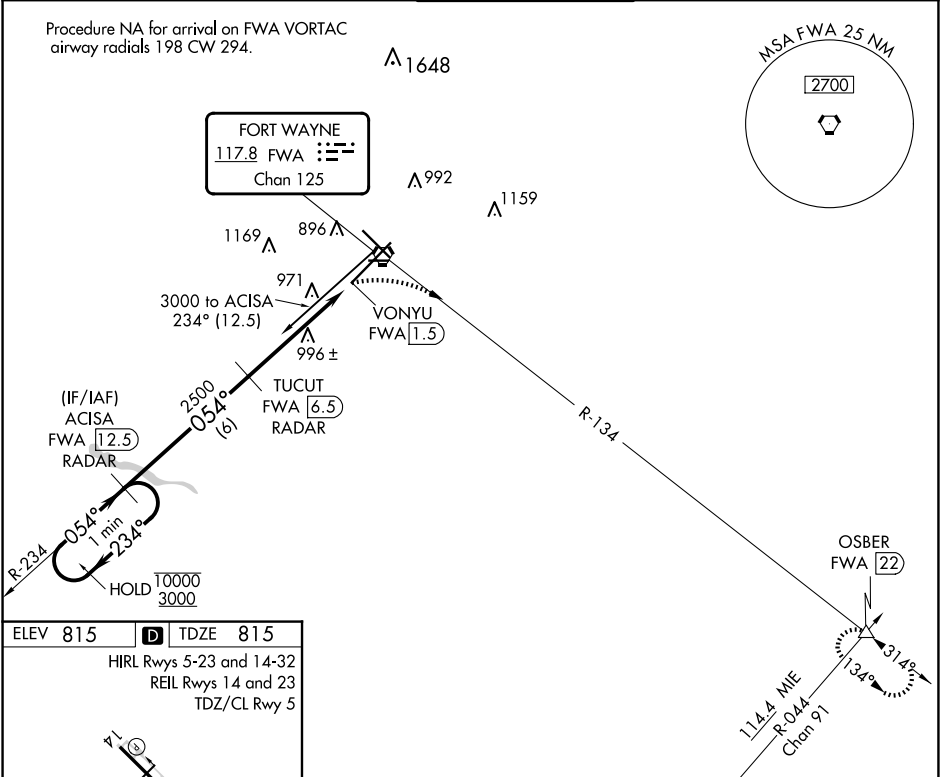


VORTAC FWA	APP CRS	Rwy Idg	11981
117.8	054°	TDZE	815
Chan 125		Apt Elev	815

VOR or TACAN RWY 5
FORT WAYNE INTL (FWA)

DME or RADAR required.	ALSF-2	MISSED APPROACH: Climbing right turn to 3000 on FWA VORTAC R-134 to OSBER INT/FWA 22 DME and hold.
For inop ALS, increase S-5 Cat C/D/E visibility to 1½ SM.		

ATIS 121.25 360.825	FORT WAYNE APP CON 127.2 284.6	FORT WAYNE TOWER 119.1 269.325	GND CON 121.9 348.6	CLNC DEL 124.75
------------------------	-----------------------------------	-----------------------------------	------------------------	--------------------



EC-2, 10 JUL 2025 to 07 AUG 2025

EC-2, 10 JUL 2025 to 07 AUG 2025