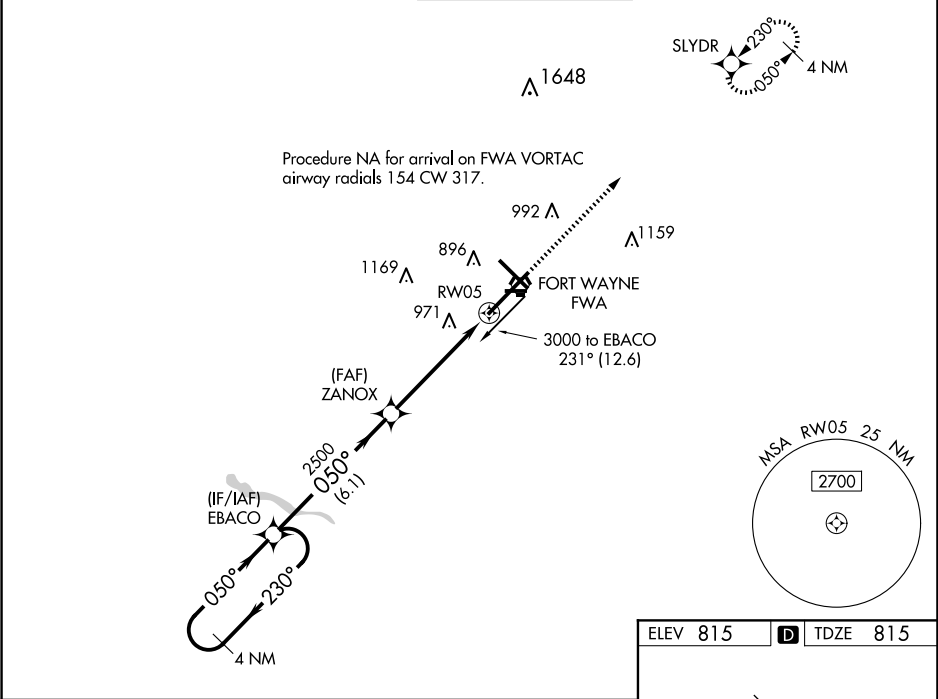


WAAS CH <b>93609</b> <b>W05A</b>	APP CRS <b>050°</b>	Rwy Idg <b>11981</b> TDZE <b>815</b> Apt Elev <b>815</b>
--	------------------------	--

RNAV (GPS) RWY 5

FORT WAYNE INTL (FWA)

<div><div>▼ ASR</div><div>For uncompensated Baro-VNAV systems, procedure NA below -16°C (4°F) or above 47°C (116°F). DME/DME RNP-0.3 NA. For inop ALS, increase LPV Cat E visibility to RVR 4000, LNAV/VNAV all Cats visibility to 1½ SM and LNAV Cat C/D/E visibility to 1¾ SM.</div></div>	<div>ALSF-2</div> <div><div><div><div></div></div></div><div><div></div></div></div>	<div>MISSED APPROACH: Climb to 3000 direct SLYDR and hold.</div>	<div>ATIS</div> <div>121.25 360.825</div>	<div>FORT WAYNE APP CON</div> <div>127.2 284.6</div>	<div>FORT WAYNE TOWER</div> <div>119.1 269.325</div>	<div>GND CON</div> <div>121.9 348.6</div>	<div>CLNC DEL</div> <div>124.75</div>
--	--	--	---	--	--	---	---------------------------------------



4 NM Holding Pattern		EBACO		ZANOX		3000		SLYDR	
3000		230°		050°		050°		2500	
GP 3.00° TCH 55°						* 1.4 NM to RW05		* LNAV only.	
		6.1 NM		3.7 NM		1.4 NM		RW05	
CATEGORY	A	B	C	D	E				
LPV DA	1065/18 250 (300-½)								
LNAV/VNAV DA	1275/60 460 (500-1¼)								
LNAV MDA	1300/24	485 (500-½)	1300/50 485 (500-1)						
CIRCLING	1300-1	485 (500-1)	1420-1¾ 605 (700-1¾)	1520-2¼ 705 (800-2¼)	1520-2½ 705 (800-2½)				

