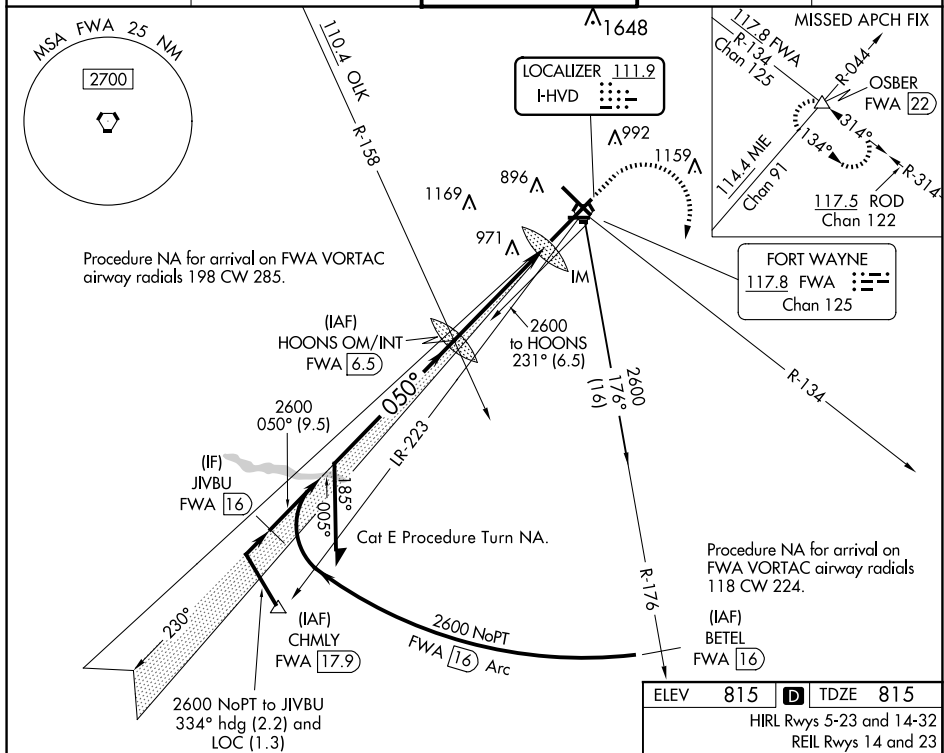


LOC I-HVD <b><u>111.9</u></b>	APP CRS <b>050°</b>	Rwy Ldg <b>11981</b> TDZE <b>815</b> Apt Elev <b>815</b>
----------------------------------	------------------------	--

ILS or LOC RWY 5  
FORT WAYNE INTL (FWA)

<p>▼ For inop ALS, increase S-ILS 5 Cat E visibility to RVR 4000 and S-LOC 5 Cats C, D, and E visibility to 1½ SM.</p> <p>ASR</p>	<p>ALSF-2</p> <p>Ⓐ</p>	<p>MISSED APPROACH: Climb to 1300 then climbing right turn to 3000 on FWA R-134 to OSBER INT/FWA 22 DME and hold.</p>
---	------------------------	---

ATIS <b>121.25 360.825</b>	FORT WAYNE APP CON <b>127.2 284.6</b>	<b>FORT WAYNE TOWER</b> <b>119.1 269.325</b>	GND CON <b>121.9 348.6</b>	CLNC DEL <b>124.75</b>
-------------------------------	--	---	-------------------------------	---------------------------



CATEGORY					
	A	B		D	E
S-ILS 5	1015/18 200 (200-½)				
S-LOC 5	1300/24	485 (500-½)	1300/50 485 (500-1)		
<b>C</b> CIRCLING	1300-1	485 (500-1)	1420-1¾ 605 (700-1¾)	1520-2¼ 705 (800-2¼)	1520-2½ 705 (800-2½)

