

<div> <div>LOC/DME I-FWA</div> <div>109.9</div> <div>Chan 36</div> </div>	<div> <div>APP CRS</div> <div>321°</div> </div>	<div> <div>Rwy Ldg</div> <div>8001</div> </div> <div> <div>TDZE</div> <div>800</div> </div> <div> <div>Apt Elev</div> <div>815</div> </div>	<div> <div>ILS or LOC RWY 32</div> <div>FORT WAYNE INTL (FWA)</div> </div>
---	---	---	--

DME required for LOC only. DME or RADAR required for procedure entry.

⚠

For inop ALS, increase S-ILS 32 visibility Cat E to RVR 4000 and increase S-LOC 32 visibility Cats C, D, and E to RVR 5500.

ASR

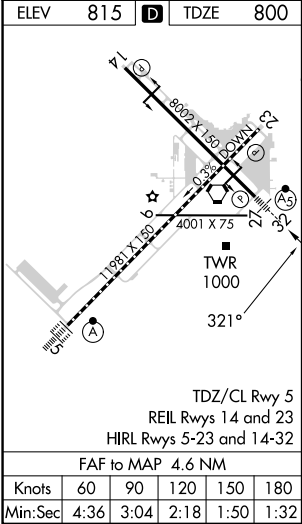
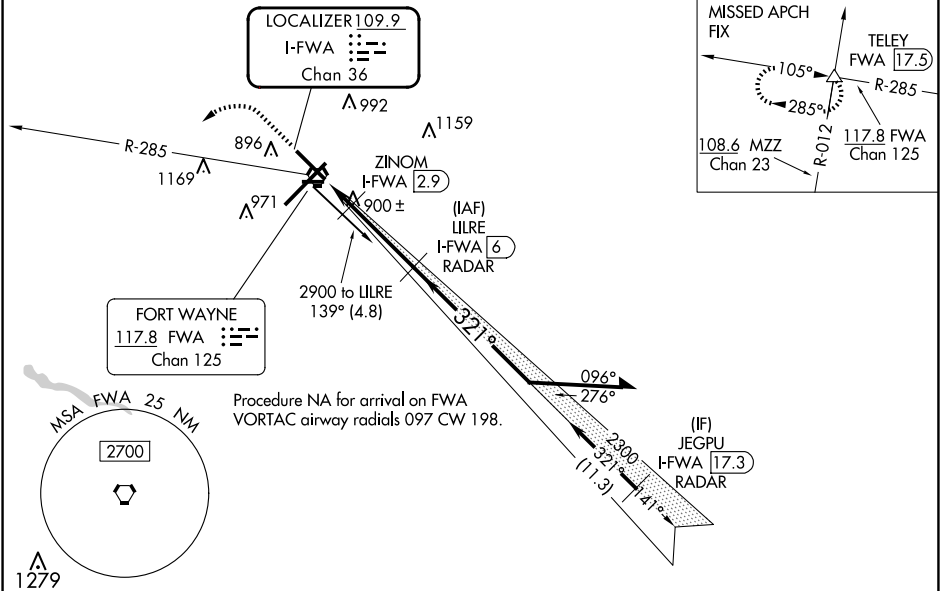
* RVR 1800 authorized with use of FD or AP or HUD to DA.

MALSR

AS

MISSED APPROACH: Climb to 3000 then left turn on FWA VORTAC R-285 to TELEY INT/FWA 17.5 DME and hold.

<div> <div>ATIS</div> <div>121.25 360.825</div> </div>	<div> <div>FORT WAYNE APP CON</div> <div>127.2 284.6</div> </div>	<div> <div>FORT WAYNE TOWER</div> <div>119.1 269.325</div> </div>	<div> <div>GND CON</div> <div>121.9 348.6</div> </div>	<div> <div>CLNC DEL</div> <div>124.75</div> </div>
--	---	---	--	--



Cat E Procedure Turn NA.					
<div> <div>3000</div> <div>FWA R-285</div> <div>TELEY</div> </div>	<div> <div>VGSI and ILS glidepath not coincident (VGSI Angle 3.00°/TCH 76°).</div> <div>Remain within 10 NM</div> <div>GS 3.00° TCH 56</div> </div>				
<div>Use I-FWA DME when on the localizer course.</div>	<div> <div>I-FWA 1.5</div> <div>ZINOM I-FWA 2.9</div> <div>LILRE I-FWA 6</div> <div>I-FWA 17.3</div> </div>				
	1.4 NM	3.2 NM			
CATEGORY	A	B	C	D	E
S-ILS 32*	1000/24 200 (200-½)				
S-LOC 32	1160/24	360 (400-½)	1160/30	360 (400-¾)	
<input checked="" type="checkbox"/> CIRCLING	1300-1	485 (500-1)	1420-1¾ 605 (700-1¾)	1520-2¼ 705 (800-2¼)	1520-2½ 705 (800-2½)