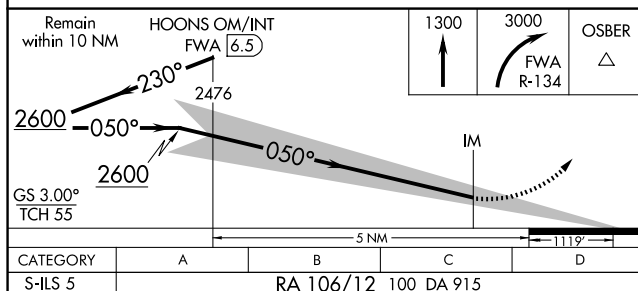
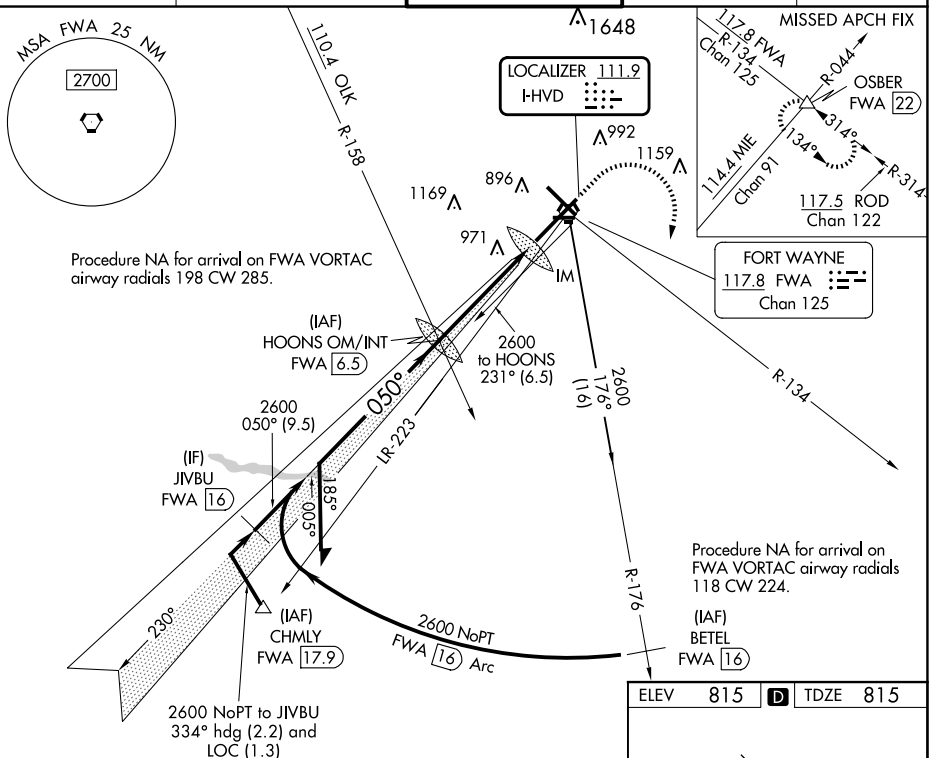


**ILS RWY 5 (CAT II)**  
FORT WAYNE INTL (FWA)

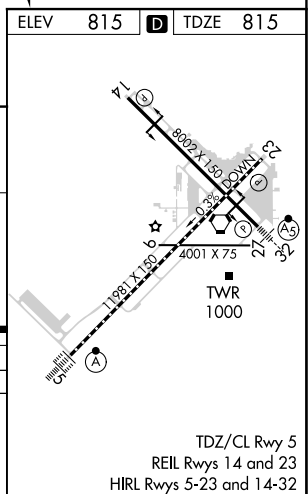
ALSF-2

**MISSED APPROACH:** Climb to 1300 then climbing right turn to 3000 on FWA R-134 to OSBER INT/FWA 22 DME and hold.

ATIS <b>121.25 360.825</b>	FORT WAYNE APP CON <b>127.2 284.6</b>	FORT WAYNE TOWER <b>119.1 269.325</b>	GND CON <b>121.9 348.6</b>	CLNC DEL <b>124.75</b>
-------------------------------	--	--	-------------------------------	---------------------------



CATEGORY II ILS - SPECIAL AIRCREW  
& AIRCRAFT CERTIFICATION REQUIRED



EC-2, 10 JUL 2025 to 07 AUG 2025