

RNAV (GPS) RWY 4

APCH CRS	Rwy Idg	4503
044°	TDZE	1066
	Arpt Elev	1066

[USA]

MARSHALL AAF (KFRI)

RNP APCH - GPS

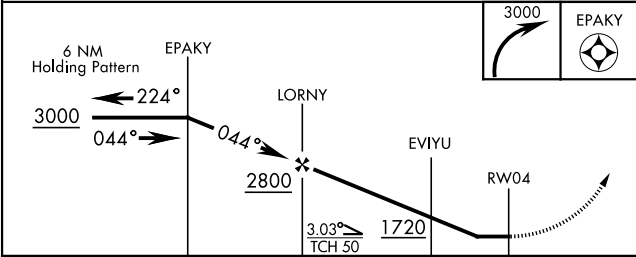
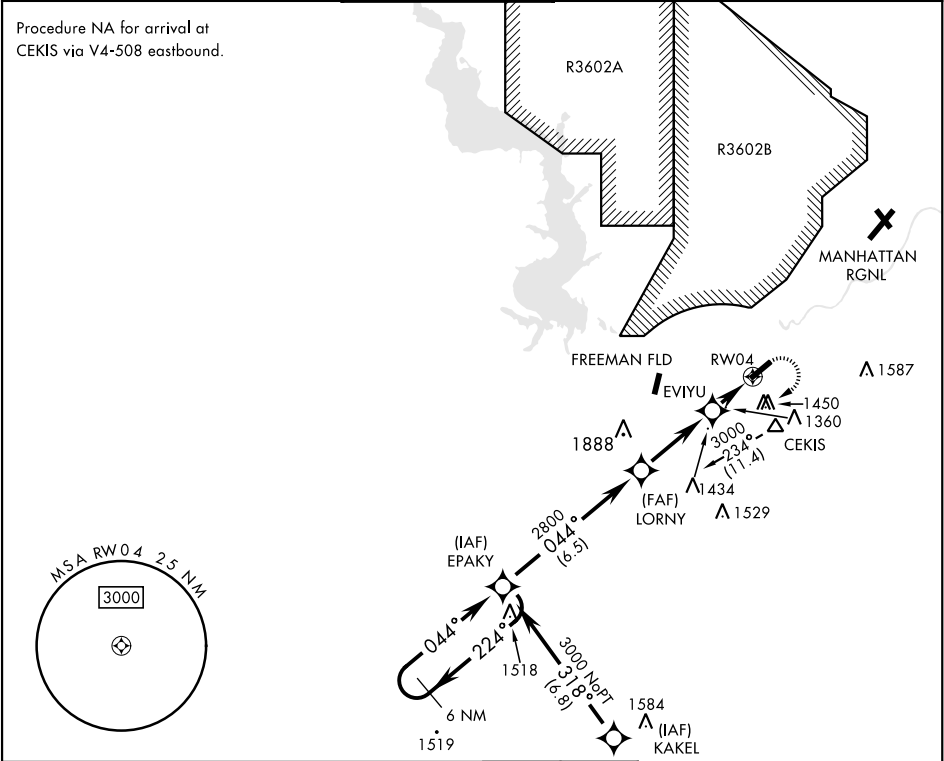


MISSED APPROACH: Climbing right turn to 3000 direct EPAKY and hold.

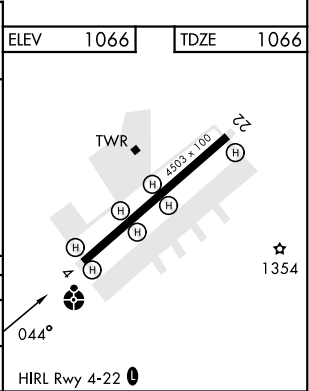
- When ALS inop increase CAT CD vis to 1¾ miles.
- Circling not authorized NW of Rwy 4-22.
- NA Visibility reduction by helicopters NA

ATIS ★	APP CON	TOWER ★	GND CON	CLNC DEL	ASR/PAR
121.025	121.25 269.05	126.2 (CTAF) 0 248.65	140.20 229.4	119.65	

Procedure NA for arrival at CEKIS via V4-508 eastbound.



CATEGORY	A	B	C	D
RNAV MDA ★	1660-1 594 (600-1)	1660-1 594 (600-1)	1660-1 594 (600-1)	1660-1 594 (600-1)
CIRCLING ★★	1700-1 634 (700-1)	1760-1 694 (700-1)	1760-2 694 (700-2)	1900-2 834 (900-2)



RNAV (GPS) RWY 4

NC-2, 10 JUL 2025 to 07 AUG 2025

NC-2, 10 JUL 2025 to 07 AUG 2025