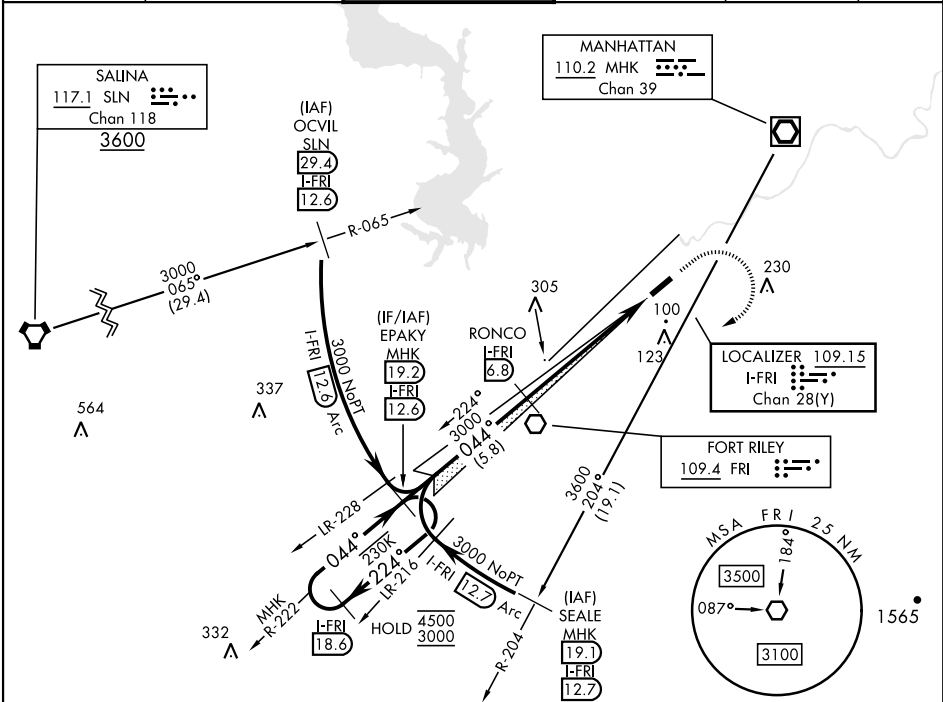


FORT RILEY, KANSAS

ILS or LOC RWY 4

LOC/DME I-FRI <b>109.15</b> Chan <b>28(Y)</b>	APCH CRS <b>044°</b>	Rwy Idg THRE <b>1065</b> Arpt Elev <b>1066</b>	[USA]	MARSHALL AAF (KFRI)	
RADAR required			ODALS	MISSED APPROACH: Climb to 1500 then climbing right turn to 3000 heading 230° expect radar vectors to EPAKY and hold.	
▼ * Circling not authorized NW of Rwy 4-22. Rwy 4 helicopter visibility reduction below ¾ mile not authorized.					

ATIS ★ <b>121.025</b>	APP CON <b>121.25 269.05</b>	TOWER ★ <b>126.2 (CTAF) 0 248.65</b>	GND CON <b>140.20 229.4</b>	CLNC DEL <b>119.65</b>	ASR/PAR
--------------------------	---------------------------------	---	--------------------------------	---------------------------	---------



EMERG SAFE ALT 100 NM 4000

