

WAAS CH 69424 W23A	APP CRS 231°	Rwy Ldg TDZE 16 Apt Elev 17
--	------------------------	---

RNAV (GPS) RWY 23

PAGE FLD (FMY)

RNP APCH - GPS.

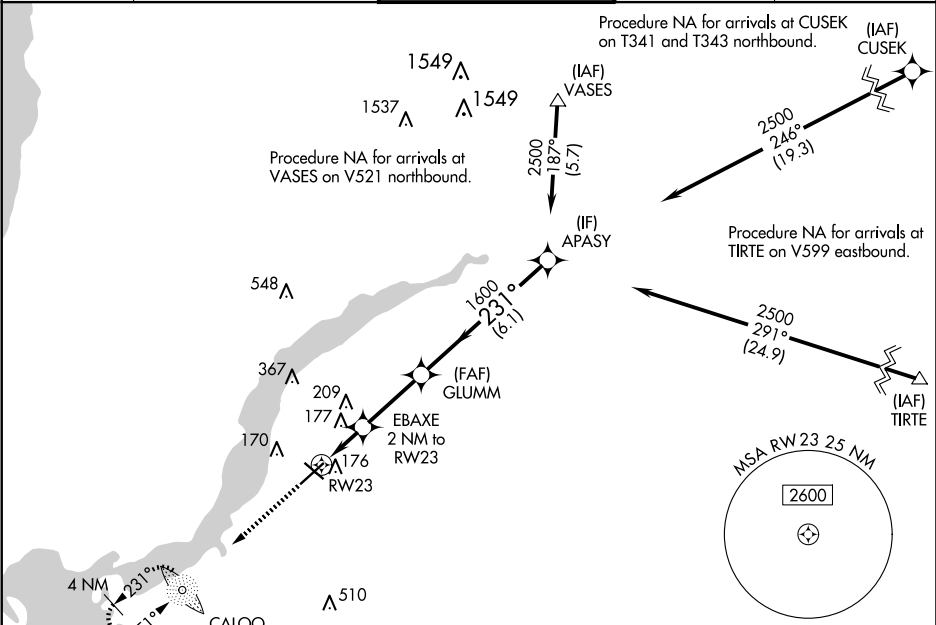
▼

⚠

Rwy 23 helicopter visibility reduction below ¾ SM NA. When Circling to Rwy 31 at night, operational VGSI required, remain on or above VGSI glidepath until threshold.
For uncompensated Baro-VNAV systems, LNAV/VNAV NA below 5°C or above 54°C.

MISSED APPROACH: Climb to 2000 direct CALOO LOM and hold, continue climb-in-hold.

ATIS 123.725	FORT MYERS APP CON ★ 125.15 306.2 (Rwys 5, 13) 126.8 306.2 (Rwys 23, 31)	PAGE TOWER ★ 119.0 (CTAF) 0 306.95	GND CON 121.7	CLNC DEL 121.7
------------------------	--	---	-------------------------	--------------------------



2000

CALOO

RW23

EBAXE 2 NM to RW23

GLUMM 1600

APASY 2500

1.1 NM to RW23

0.8 NM

2.8 NM

6.1 NM

700

1600

2500

GP 3.00°

TCH 59

CATEGORY	A	B	C	D
LPV DA	278-7/8 262 (300-7/8)			
LNAV/VNAV DA	392-1 376 (400-1)			
LNAV MDA	440-1 424 (500-1)	440-1¼ 424 (500-1¼)		
CIRCLING	540-1 523 (600-1)	600-1½ 583 (600-1½)	680-2 663 (700-2)	

REIL Rwys 5, 13, 23 and 31

MIRL Rwy 5-23 and 13-31