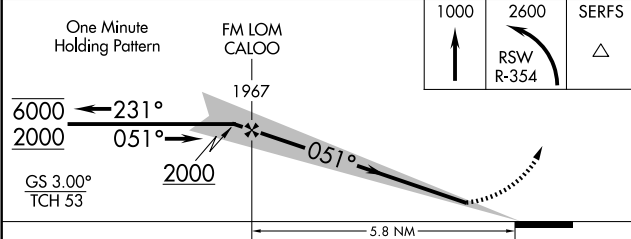
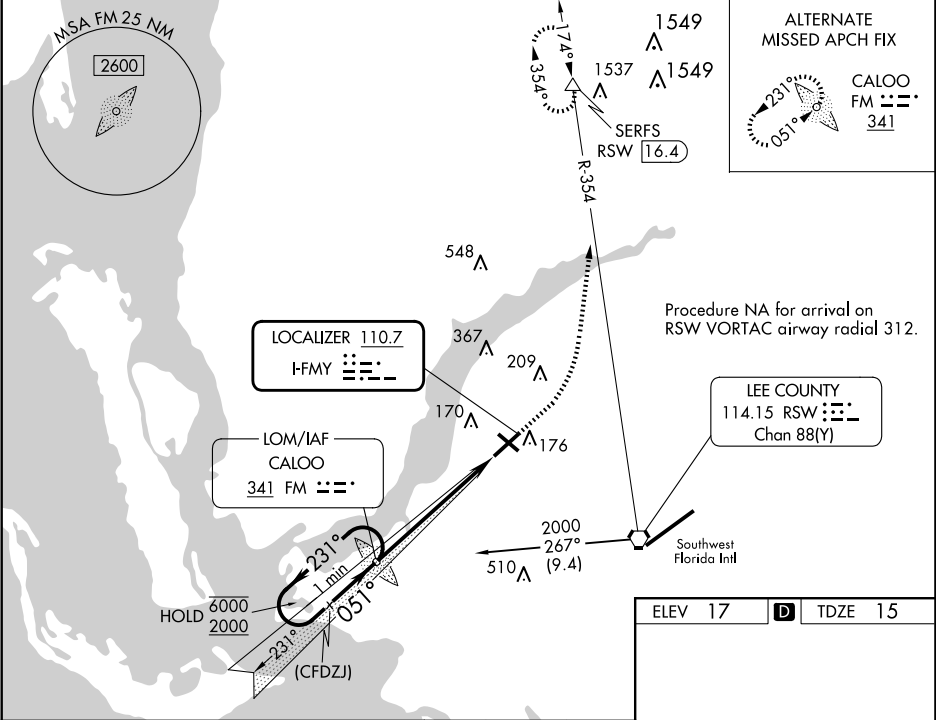


LOC I-FMY	APP CRS	Rwy Ldg
110.7	051°	5545
		TDZE
		15
		Apt Elev
		17

ILS or LOC RWY 5
PAGE FLD (FMY)

ADF or RADAR required for procedure entry. ADF required for LOC only. DME Required.		MISSED APPROACH: Climb to 1000 then climbing left turn to 2600 on RSW VORTAC R-354 to SERFS/RSW 16.4 DME and hold.
	Rwy 5 helicopter visibility reduction below 3/4 SM NA. When Circling to Rwy 31 at night, operational VGSI required, remain on or above VGSI glidepath until threshold.	

ATIS	FORT MYERS APP CON ★	PAGE TOWER ★	GND CON	CLNC DEL
123.725	125.15 306.2 (Rwys 5, 13) 126.8 306.2 (Rwys 23, 31)	119.0 (CTAF) 306.95	121.7	121.7



CATEGORY	A	B	C	D
S-ILS 5		265-1	250 (300-1)	
S-LOC 5	460-1	445 (500-1)	460-1 3/8	445 (500-1 3/8)
CIRCLING	540-1	523 (600-1)	600-1 1/2 583 (600-1 1/2)	680-2 663 (700-2)

