

VORTAC MCI	APP CRS	Rwy Idg	N/A
113.25	296°	TDZE	N/A
Chan 79 (Y)		Apt Elev	771

VOR-A

SHERMAN AAF (F'LV)

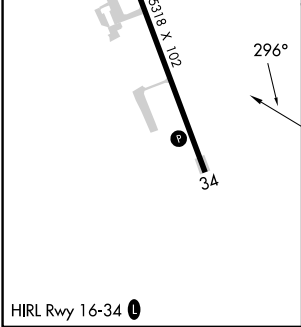
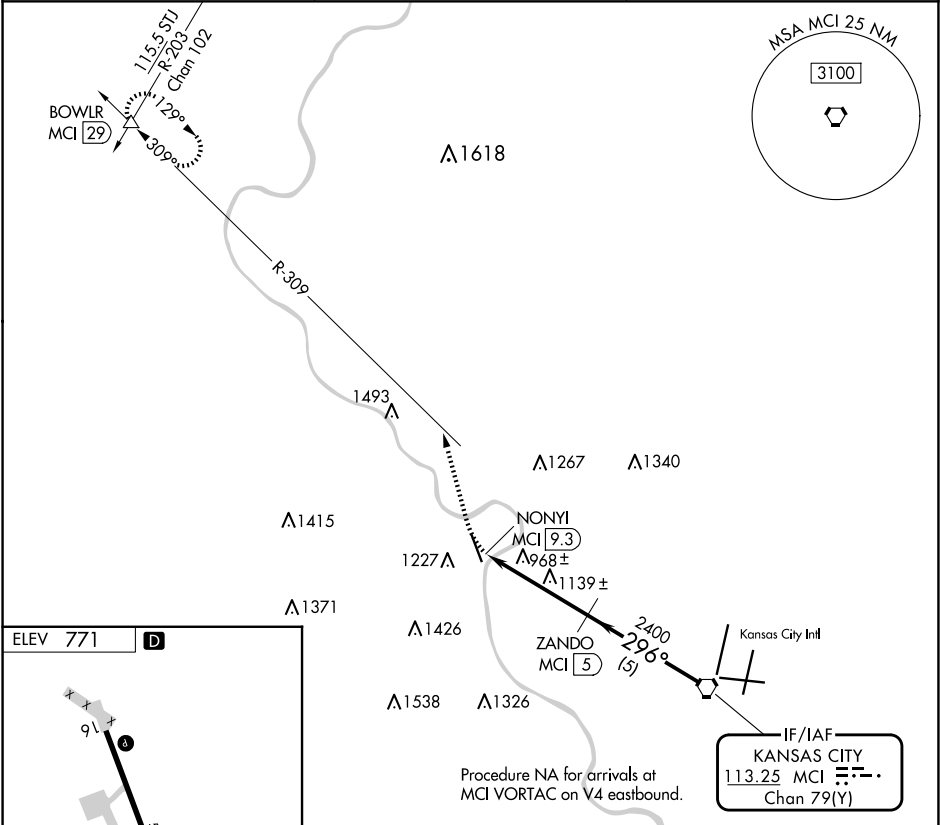
DME required.

NA

Procedure NA at night. Circling NA west of Rwy 16-34. Use Kansas City Intl altimeter setting.

MISSED APPROACH: Climbing right turn to 3000 on heading 340° and MCI R-309 to BOWLR and hold.

MCI ASOS 128.375	KANSAS CITY APP CON 124.7 284.7	CTAF 126.2
----------------------------	---	----------------------



3000	MCI R-309	BOWLR	MCI VORTAC
hdg 340°			
Nonyi MCI 9.3	Zando MCI 5		
2400	296°	4000	
4.3 NM	5 NM		
CATEGORY	A	B	C
CIRCLING	1460-1	689 (700-1)	1500-2
			729 (800-2)
			1640-2¾
			869 (900-2¾)