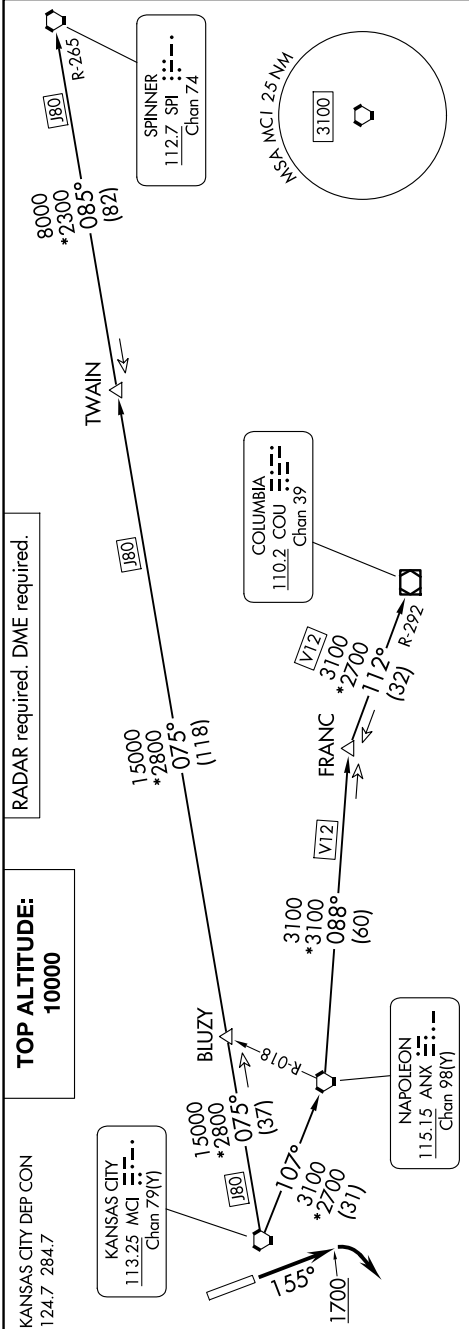


NC-2, 10 JUL 2025 to 07 AUG 2025



DEPARTURE ROUTE DESCRIPTION

**TAKEOFF RUNWAY 16:** Climb on heading 155° to 1700 before turning southwest, thence, . . .  
... climb on assigned heading for RADAR vectors to appropriate route. Maintain 10000  
or as assigned by ATC, expect filed altitude 10 minutes after departure.

**TAKEOFF RUNWAY 34:** Climb on assigned heading for RADAR vectors to appropriate route.  
Maintain 10000 or as assigned by ATC, expect filed altitude 10 minutes after departure.

**COLUMBIA TRANSITION (LAKES5.COU):** From over MCI VORTAC on MCI R-107 to ANX  
VORTAC, then on ANX R-088 and COU R-292 to COU VOR/DME.

**FRANC TRANSITION (LAKES5.FRANC):** From over MCI VORTAC on MCI R-107 to ANX  
VORTAC, then on ANX R-088 to FRANC.

**SPINER TRANSITION (LAKES5.SPI):** From over MCI VORTAC on MCI R-075 and SPI R-265  
to TWAIN, then on SPI R-265 to SPI VORTAC.

**TWAIN TRANSITION (LAKES5.TWAIN):** From over MCI VORTAC on MCI R-075 and SPI R-265  
to TWAIN.

TAKEOFF MINIMUMS  
Rwys 16, 34: Standard.

NOTE: Chart not to scale.

NC-2, 10 JUL 2025 to 07 AUG 2025