

WRIGHTSTOWN, NEW JERSEY

VOR/DME or TACAN RWY 36

VORTAC GXU 110.6 Chan 43	APCH CRS 021°	Rwy Idg 7126 TDZE 129 Arpt Elev 141
--------------------------------	------------------	-------------------------------------------

AL-150 (USAF)

MC GUIRE FIELD (JOINT BASE MC GUIRE DIX LAKEHURST) (KWRI)

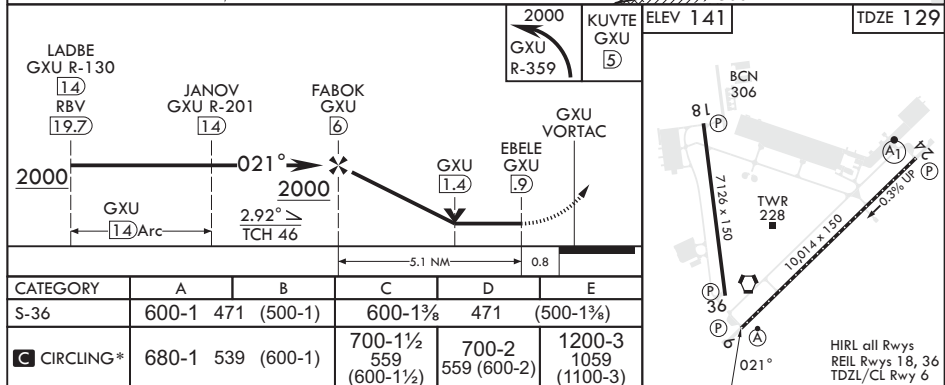
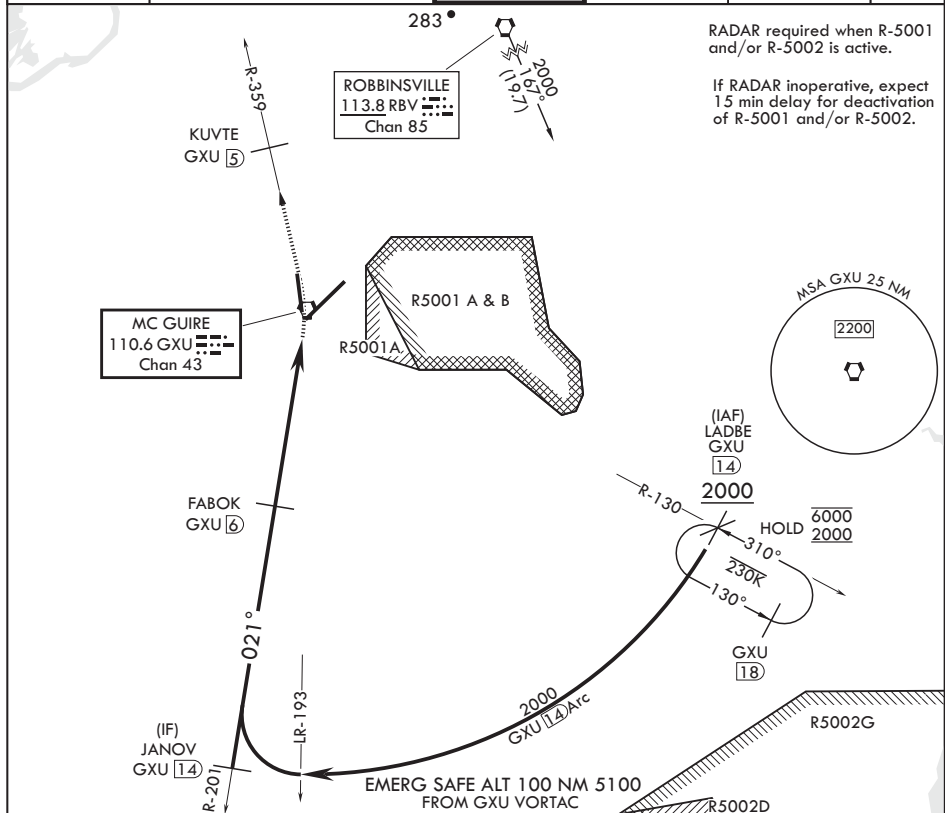
T * Circling NA SE of Rwy 24 and E of Rwy 36 when R-5001 A/B Active.

MISSED APPROACH: Climb to 2000 via GXU R-359 to KUVTE, expect further clearance with ATC.

ATIS 110.6 270.1	MC GUIRE APP CON/DEP CON 126.475 363.8	TOWER 118.65 255.6	GND CON 121.8 275.8	CLNC DEL 135.2 335.8	PAR
---------------------	-------------------------------------------	-----------------------	------------------------	-------------------------	-----

RADAR required when R-5001 and/or R-5002 is active.

If RADAR inoperative, expect 15 min delay for deactivation of R-5001 and/or R-5002.



WRIGHTSTOWN, NEW JERSEY

MC GUIRE FIELD (JOINT BASE MC GUIRE DIX LAKEHURST) (KWRI)

Amdt 7 18MAY23

40°01'N - 74°36'W

VOR/DME or TACAN RWY 36

NE-2, 10 JUL 2025 to 07 AUG 2025

NE-2, 10 JUL 2025 to 07 AUG 2025