

WRIGHTSTOWN, NEW JERSEY

VORTAC GXU 110.6 Chan 43	APCH CRS 179°	Rwy Idg 7126 TDZE 123 Arpt Elev 141
--	-------------------------	--

AL-150 [USAF]

VOR/DME or TACAN RWY 18
MC GUIRE FLD,
(JOINT BASE MC GUIRE DIX LAKEHURST) (KWRI)

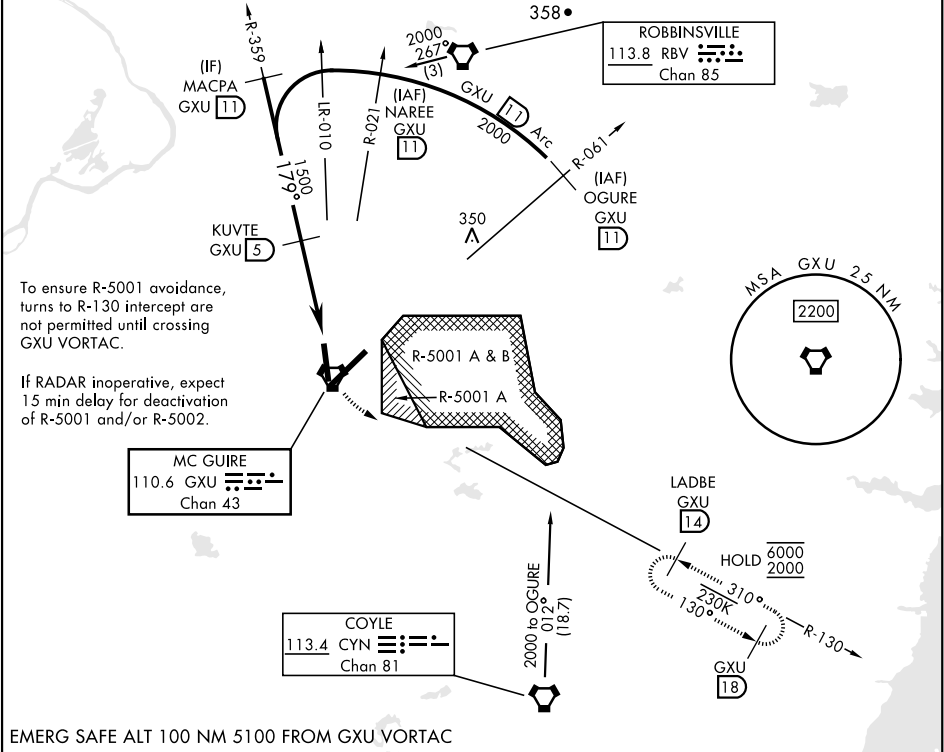
23138

RADAR required when R-5001 and/or R-5002 is active.

* Circling NA SE of RWY 24 and E of RWY 36 when R-5001 A/B active.

MISSED APPROACH: Climb to 2000 via GXU VORTAC R-130 to LADBE and hold, DO NOT turn prior to GXU.

ATIS 110.6 270.1	MC GUIRE APP CON/DEP CON 126.475 363.8	MC GUIRE TOWER 118.65 255.6	GND CON 121.8 275.8	CLNC DEL 135.2 335.8	PAR
----------------------------	--	---------------------------------------	-------------------------------	--------------------------------	-----



OGURE R-061 GXU 11			NAREE R-021 GXU 11			MACPA R-359 GXU 11			KUVTE GXU 5			GXU 2.5 IPURE GXU 1.5			LADBE GXU 14			ELEV 141			TDZE 123		
2000			2000			2000			179°			3.18° TCH 68			3.5 NM			0.4			179°		
CATEGORY			A			B			C			D			E								
S-18			640-1			517 (500-1)			640-1½			517 (500-1½)											
CIRCLING*			680-1			539 (600-1)			700-1½			559 (600-1½)			700-2			559 (600-2)			1200-3		

WRIGHTSTOWN, NEW JERSEY

40°01'N-74°36'W

Amtd 8 18MAY23

MC GUIRE FLD,
(JOINT BASE MC GUIRE DIX LAKEHURST) (KWRI)

VOR/DME or TACAN RWY 18

NE-2, 10 JUL 2025 to 07 AUG 2025

NE-2, 10 JUL 2025 to 07 AUG 2025