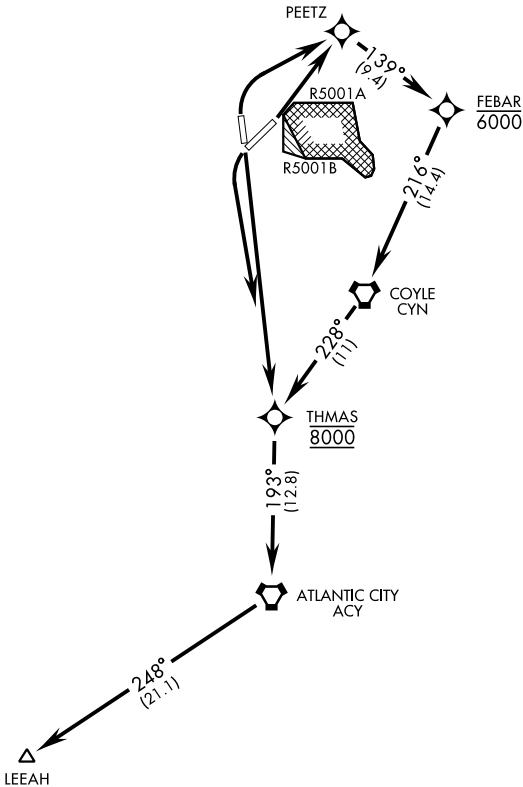


|  |           |     |          |     |     |      |      |      |      |
|--|-----------|-----|----------|-----|-----|------|------|------|------|
| ATIS 110.6 270.1<br>CLNC DEL 135.2 335.8<br>GND CON 121.8 275.8<br>TOWER 118.65 255.6<br>MC GUIRE APP CON/DEP CON<br>126.475 363.8 | RNAV1-GPS | Rwy | Knots    | 60  | 120 | 180  | 240  | 300  | 360  |
|  | [USAF]    | 06  | V/V(fpm) | 237 | 474 | 711  | 948  | 1185 | 1422 |
|  |           | 18  | V/V(fpm) | 387 | 774 | 1161 | 1548 | 1935 | 2322 |
|  |           | 24  | V/V(fpm) | 384 | 768 | 1152 | 1536 | 1920 | 2304 |
|  |           | 36  | V/V(fpm) | 213 | 426 | 639  | 852  | 1065 | 1278 |

ATC Climb Rate to 8000



Rwy 06 Departure: RADAR required (when R-5001 is active)

If RADAR inoperative, expect 15 min delay for deactivation of R-5001.

▼

DEPARTURE ROUTE DESCRIPTION

TAKEOFF RWY 06: Climb direct PEETZ then track and climb as depicted. Maintain 8000.

TAKEOFF RWY 18: Climb direct to cross THMAS at and maintain 8000, then track as depicted.

TAKEOFF RWY 24: Climbing left turn direct to cross THMAS at and maintain 8000, then track as depicted.

TAKEOFF RWY 36: Climbing right turn direct PEETZ then track and climb as depicted. Maintain 8000.

Expect further ATC clearance to filed altitude within 10 minutes after departure.

NE-2, 10 JUL 2025 to 07 AUG 2025

NE-2, 10 JUL 2025 to 07 AUG 2025