

WRIGHTSTOWN, NEW JERSEY

## RNAV (RNP) Z RWY 24

APCH CRS <b>238°</b>	Rwy Idg <b>10,014</b> TDZE <b>117</b> Arpt Elev <b>141</b>
-------------------------	--

AL-150 (USAF)

MC GUIRE FIELD (JOINT BASE MC GUIRE DIX LAKEHURST) (KWRI)

RNP AR APCH. From EXMEN and GRAGE: RF.

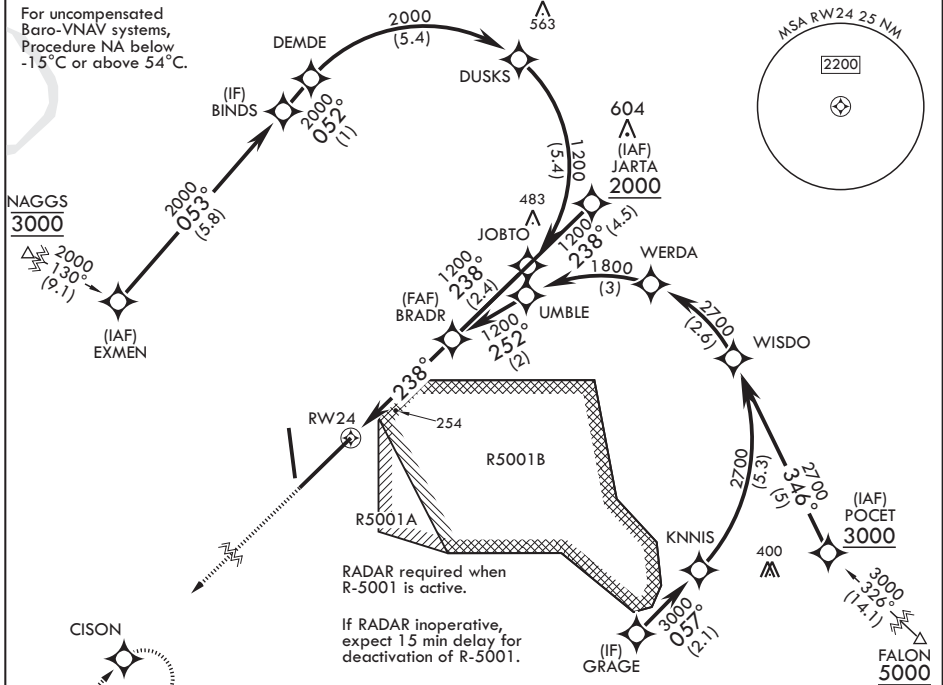
**T** \* When ALS inop increase RVR to 50, vis to 1 mile.  
\*\* When ALS inop increase vis to 1 3/8 miles.

ALSF-1

**MISSED APPROACH:** Climb to 2100 on track 238° to CISON and hold, continue to climb-in-hold to 2100.

ATIS 110.6 270.1	MC GUIRE APP CON/DEP CON 126.475 363.8	TOWER 118.65 255.6	GND CON 121.8 275.8	CLNC DEL 135.2 335.8	PAR
---------------------	---	-----------------------	------------------------	-------------------------	-----

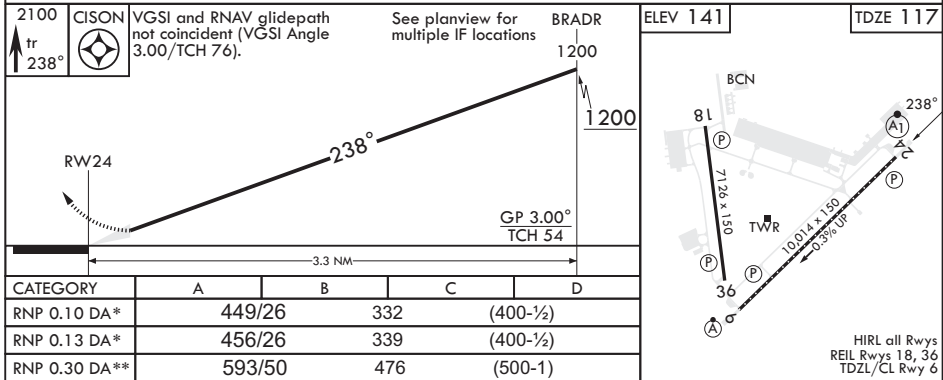
For uncompensated Baro-VNAV systems, Procedure NA below  $-15^{\circ}\text{C}$  or above  $54^{\circ}\text{C}$ .



**AUTHORIZATION  
REQUIRED**

When R-5001 is active with aerial gunnery, entry from GRAGE and POCET NA.

EMERG SAFE ALT 100 NM 5100



WRIGHTSTOWN, NEW JERSEY

Orig 20APR23

MC GUIRE FIELD (JOINT BASE MC GUIRE DIX LAKEHURST) (KWRI)

40°01'N - 74°36'W

## RNAV (RNP) Z RWY 24

HIRL all Rwys  
REIL Rwys 18, 36  
TDZL/CL Rwy 6

NE-2, 10 JUL 2025 to 07 AUG 2025

NE-2, 10 JUL 2025 to 07 AUG 2025